

Newsletter

Volume 9 - Term 2 - 2026



Principal's address

Dear Parents and Caregivers,

Semester 1 Reports

Student Semester 1 reports will be issued via Email and Connect on Wednesday 1 July. Parents and carers will receive an email notification when reports become available.

Please ensure the school has your current email address, as a valid email address is required to receive the notification and access link. If your contact details have changed, please update them with the school office as soon as possible.

Please note that the link included in the email will expire after four weeks. Reports can always be accessed through the Connect website or the Connect Now app at any time.

If you experience any difficulties accessing your child's report, please contact the school office for assistance.

Public School Review

As advised previously, we underwent our school review earlier in the term. The report is now available and can be found at schools online.
<https://www.det.wa.edu.au/schoolsonline/home.do>

Parent-Teacher Interview Day – Term 3

Our second Parent-Teacher Interview Day for the year will be held on Monday, 20th of July.

We encourage all families to book a meeting, regardless of how your child is performing. These interviews are a valuable opportunity to celebrate progress, discuss goals, and strengthen the partnership between home and school.

Please note: **This is a pupil-free day**, so students are not required to attend.

Appointments are available with classroom and specialist teachers. If you'd like to meet with a specialist teacher, we recommend booking early as places are limited.

If you are unable to attend on the day, please contact your child's teacher to arrange an alternative time.

Please follow the link to book or scan one of the QR codes displayed around the school <https://www.schoolinterviews.com.au/code/av5cq>

Dates to Remember

Friday 19 June

Newsletter – Room 13

Faction Cross Country Yr 1-6

Monday 22 June

School Photos Day 1

Tuesday 23 June

Dance till you drop Concert -
Tuesday Group

Thursday 25 June

Dance till you drop concert –
Thursday Group

Friday 26 June

School Photos Day 2

Interschool Winter Carnival Year
5 & 6

Week 11 – NAIDOC Week

Ashburton Drive Primary School

6 Nullagine Way
Gosnells WA 6110
9234 6300

[AshburtonDrive.PS@
education.wa.edu.au](mailto:AshburtonDrive.PS@education.wa.edu.au)

School hours

Start: 8:45am

Recess: 10:55am – 11:15am

Lunch: 1:15pm – 1:45pm

Final bell: 2:45pm

Staff Development Day – Term 3

We will be holding our Staff Development Day in Week 4 on Friday, 14th of August. By moving our development day to later in the term, we've been able to secure high-quality external facilitators who are often booked out years in advance. This professional learning day continues our whole-school approach of the Berry Street Education Model (BSEM). Berry Street provides evidence-based strategies to support student engagement, emotional regulation, and trauma-informed practice, building strong foundations for both wellbeing and learning. We're excited to continue this journey and look forward to sharing the positive impact it will have across our school community.

Year 5 & 6 Interschool Sport Day

Preparations are in full swing, and our students have been training hard throughout the term.

Friday, 26th June our Year 5 and 6 students will proudly represent our school in Netball, AFL, Soccer, and Hockey at the interschool sport carnival. We're looking forward to a fantastic day of fun, teamwork, and friendly competition as they demonstrate our school values both on and off the field.

School Cross Country

On Friday 19 June, students participated in our annual School Cross Country. It was wonderful to see so many students demonstrating determination, resilience and sportsmanship as they challenged themselves on the course.

Congratulations to all students who took part and gave their best effort. We are proud of the positive attitudes displayed throughout the day and the encouragement shown to fellow competitors.

Thank you to our staff and volunteers for their support in making the event a success. We also congratulate those students who qualified to represent our school at the upcoming Interschool Cross Country event.

Kindy and Pre-Primary enrolment.

Applications are now open for Kindergarten and Pre Primary 2027. If you have a child who is

eligible and you have not already submitted an application to enrol, please complete an application for enrolment and return to the front office. When applying, please ensure you have the following relevant documents attached: 1 x proof of address, Birth Certificate, Australian Citizenship Paper or Visa/Passport (if applicable) Immunisation History statement downloaded from the Medicare website, must be dated within the last two months.

Positive Behaviour Support Focus Term 2 Week 10 & 11 is 'Respectful Personal Space and Boundaries'.

In Week 10 and 11 of Term 2, the focus of our PBS lessons (Positive Behaviour Support) is 'Respectful Personal Space and Boundaries' and was taken from our focus area of 'Respectful Relationships'. Please support us by discussing this with your children and encouraging them to use 'Respectful Personal Space and Boundaries' both at home and at school.

Help Keep Our School Grounds Clean

We are fortunate to have beautiful school grounds and ovals that are enjoyed by our students every day for sport, play and outdoor learning. We kindly ask all community members walking their dogs around the school to please clean up after their pets. Unfortunately, dog waste left on the oval and surrounding grounds creates an unpleasant and unhygienic environment for students and staff. By carrying a bag and disposing of pet waste responsibly, you can help keep our school grounds clean, safe and enjoyable for everyone. Thank you for your cooperation and support.

AusAlert – New National Emergency Warning System

The Australian Government is launching AusAlert, a new national warning system that sends emergency alerts directly to compatible mobile devices, including phones, tablets, smart watches, vehicle devices and safety watches.

AusAlert provides important information during emergencies such as bushfires, floods, cyclones, public health emergencies and security threats.

There are two alert levels:

Critical Alert – Used when there is an immediate threat to life or property. These alerts override silent and do not disturb settings and cannot be turned off.

Priority Alert – Used to provide advice about potential emergency events. These alerts do not override silent settings and can be turned off in your device settings. Before AusAlert is fully operational in October 2026, testing will be conducted across Australia to ensure the system works effectively and that people recognise the alerts.

A national test will take place on Monday 27 July 2026 at 12:00 pm AWST. All compatible mobile devices across Australia will receive a test alert on this day.

As the test will occur during school hours, staff, students, parents and carers are encouraged to be aware of the test and prepared for the alert sound and notification.

AusAlert helps ensure Australians receive timely information so they can act quickly and stay safe during emergencies.

Please stay up to date with the latest information by ensuring you are connected to Connect. Both the Primary School and P&C are on Facebook, please find us there for updates and notices. The school website can be found at <https://www.ashburtondriveps.wa.edu.au/>

Please stay up to date with the latest information by ensuring you are connected to Connect. Both the Primary School and P&C are on Facebook, please find us there for updates and notices. The school website can be found at <https://www.ashburtondriveps.wa.edu.au/>

Kind Regards

Heather Fallo

Principal

Connected Community School

You told us that families would like greater support across a range of areas and that accessing services would be easier if they were available on the school site. Your feedback has helped shape our priorities as a Connected Community School .

As we move into Semester 2, we are focusing on six key areas: **Staffing, Healthcare, Student Wellbeing, Student Learning, Family Support and Engagement, and Early Years.** Several exciting new initiatives will be launching throughout the semester, and we look forward to sharing more information with you soon.

In the meantime, we would love to continue hearing your thoughts. What are we doing well? What could we do better? Your feedback is invaluable in helping us ensure we get the right services and supports to meet the needs of our students and families.

You can find us in the **Hub Rooms** (formerly Classrooms 3 and 4) during the Open Nights on Tuesday 23rd June and Thursday 25th June. We'll be serving refreshments and handing out raffle tickets to parents and carers who have completed their **National School Opinion Survey (NSOS)**. Simply bring along a screenshot showing your completed survey, collect your raffle ticket, and go into the draw to win a **\$100 Uniform Shop voucher** — easy!

If you have a child who will be enrolling at Ashburton Drive Primary School in 2027, we would love to meet you. Please visit the office to collect an enrolment form, and a member of our team will be in touch.

We look forward to seeing you at Open Night!



**Apply to
enrol your
child for
2027**

Closing date: 24 July 2026

School Photos



SCHOOL ORDER CODE
SHWYN2

SCHOOL PHOTO DAY IS COMING! Monday 22nd June and Friday 26th June

LAST DAY TO ORDER SIBLING PHOTOS

Midday, Friday 19th June

Order Early! Once the maximum capacity of sibling orders has been reached and/or the sibling closing time has passed, no more sibling orders can be placed. There is a physical limit in the schools schedule as to how many sibling photos can be taken.

LAST DAY TO ORDER CLASS & INDIVIDUAL PHOTOS

Friday 6th July 2026

Order within 10 calendar days of photo day to secure discounted photo day prices. Late orders are handled separately to the main school delivery and incur a \$50 custom service charge. This charge cannot be waived.



Order now using the QR code or visit kapture.com.au
Check our website [FAQs](#) for all your photo day questions!



Monday Photo Schedule 22 June

<p>8:00am - 8:15am 8:20am - 8:45am 8:45am 9:15am 10:15am 10:35am 11:20am 11:50am 12:30pm 1:15pm - 1:45pm</p>	<p>Sibling Photos Before School A-D - In the Library Sibling Photos Before School E-I - In the Library Year 6 Graduation Photo Room 17 Unit 1A Unit 2 Room 14 Room 18 Room 13 Student Voice IMSS Brass Future Ready Skills Academy IMSS Guitar Student Council Faction Capts</p>
--	--

1:50pm
2:15pm

Choir
Musical Theatre

Friday Photo Schedule 26 June

<p>8:00am - 8:15am 8:20am - 8:45am 8:55am 9:15am 9:35am 9:55am 10:15am 10:35am 11:25am 11:45am 12:05pm 12:25pm 12:45pm 1:55pm 1:55pm</p>	<p>Sibling Photos Before School J-R - In the Library Sibling Photos Before School S-Z - In the Library Unit 4 Unit 1B Unit 3 Room 2 Room 10 Room 11 Room 12 Room 7 Room 8 Room 9 Room 6 Room 15 Room 16</p>
--	---

1:55pm
1:55pm

Dance Till You Drop Concerts

Students have been working very hard this term in preparation of their upcoming dance concerts. A reminder that the dance concerts will be held on Tuesday and Thursday of Week 10.

The timeline for the dance concerts will be as follows:

- Students return to their classrooms at 4:10pm to prepare for the dance concert with their classroom teacher.
- Dance concert begins at 4:30pm in the Undercover Area.
- Once the concert has finished, students must return to their classrooms with their teacher.
- Parents must then collect students from their classroom.
- Classrooms will be open from the end of the concert until 5:30PM We look forward to seeing everybody there!

DANCE CONCERT TIMETABLE

Tuesday 23 June

Unit 1A & Unit 2
Unit 4
Room 10
Room 12
Room 6
Room 8
Room 16
Room 13
Room 17

DON'T MISS IT!

DANCE CONCERT TIMETABLE

Thursday 25 June

Unit 1B
Unit 3
Room 2
Room 11
Room 7
Room 9
Room 15
Room 14
Room 18

DON'T MISS IT!

ROOM 13

Room 13 Art: Zentangle Animal Designs

This term, the Year 5 students in Room 13 have been developing their understanding of key art elements, including line, balance, contrast, repetition, and pattern, through a creative project exploring Zentangle art.

Learning the Skills of Line and Pattern

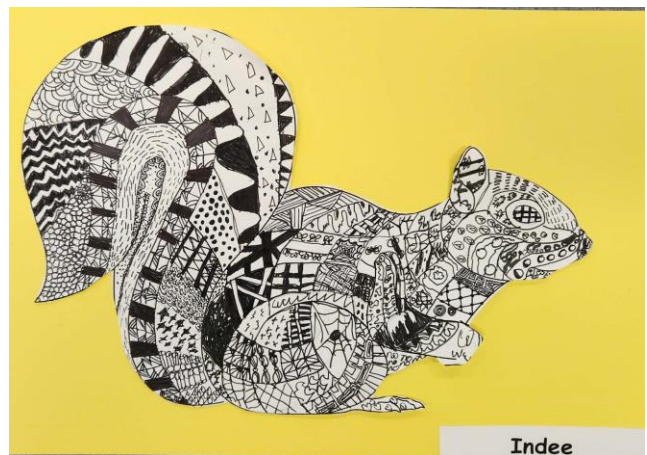
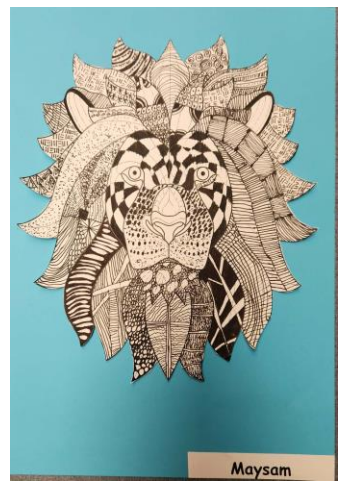
We began by investigating how artists use lines to create movement, texture, and visual interest. Students experimented with a range of Zentangle-style patterns, practising curved lines, straight lines, cross-hatching, spirals, dots, waves, and geometric repeats. This practice helped them understand how repetition and contrast can turn simple marks into complex, eye-catching designs.

Applying the Skills: Animal Head Designs

Once students had built confidence with a variety of patterns, they applied their new skills to a larger artwork. Each student selected an outline of an animal head and filled different sections with their chosen patterns. This required them to think about balance, making sure their patterns worked together, and composition, deciding where to place bold patterns versus more delicate ones.

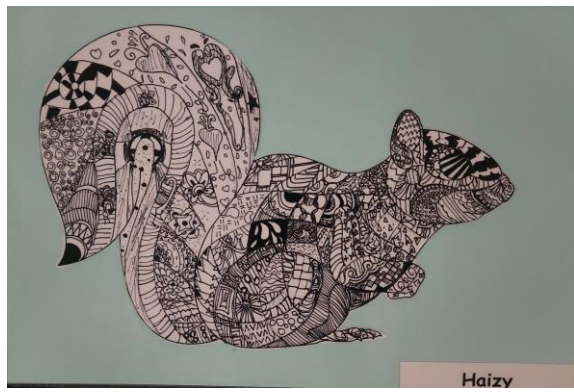
What Students Gained

- Mindful focus through slow, intentional pattern-making. A lot of patience was involved.
- Fine-motor control from repeated, detailed patterns.
- Creative decision-making when selecting and arranging patterns.
- A deeper understanding of how artists use line, pattern, and contrast to create visual impact.

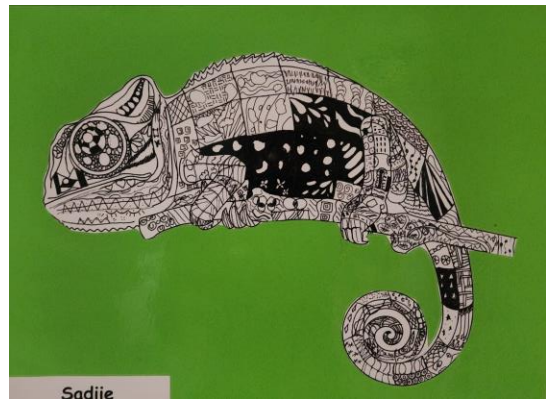




Imogen



Haizy



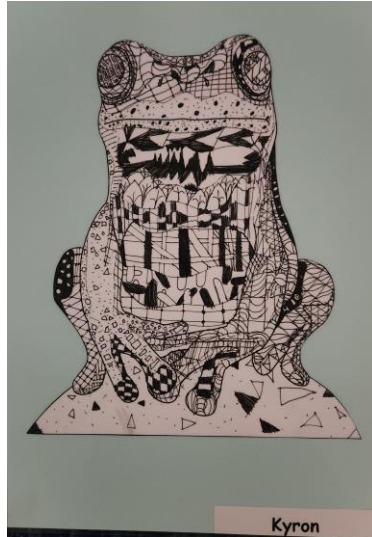
Sadiie



Lillian



Adeeva



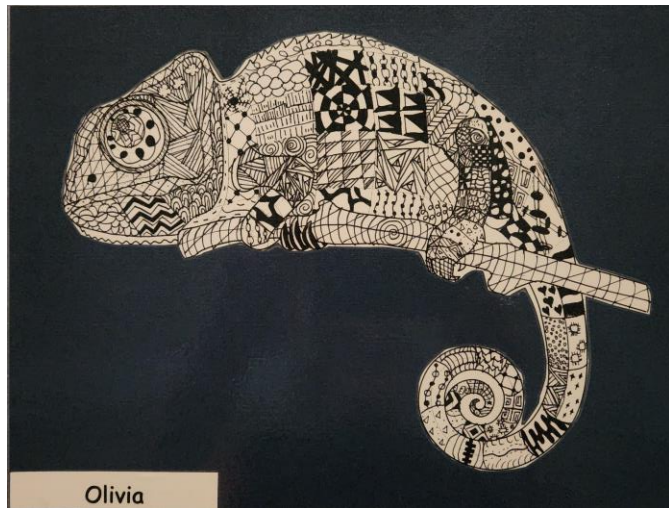
Kyron



Jaeden



Chase



Olivia



Junayna



Zyon



Zenairah



Jordynn

P&C News

🍪🍪🍪 A big Thank you to everyone who bought a tub or more in our recent Cookie Barrell, Cookie Dough fundraiser. Cookie Tubs should be available on Tuesday June 30. We will confirm this closer to the day!

👥 The P&C are needing more members to continue the valuable contributions they make to the school!! See the list below and the P&C would love to hear from you 🎉

What are your talents?

- *Meeting input
- *Voting at meetings
- *Promoting events
- *Grant writing
- *Social media
- *Organizing fun & events
- *Financial stuff
- *Anything- tell us

If you were going to attend a P&C meeting, what time of day suits you?

Morning / Afternoon/ Evening. What days best suit you? Monday/ Tuesday/ Wednesday/ Thursday/ Friday/ Weekends

ADPS P&C

Uniform shop news

Open every Wednesday 8:30 am to 9:15 am. All sizes are back in stock.

Lost property is located outside the library. Please ensure everything is labelled - if it has a name, we can get it returned to you.

Thank you



Community News

May	
Setting Boundaries Thursday 14 May 2026 12.30pm - 2.00pm Westfield Park Child and Parent Centre 11 Hemingway Drive Camillo ✉ parenting@communicare.org.au 🔗 www.trybooking.com/DKPCO	 All About Sleep Friday 15 May 2026 10.00am - 11.30am Armadale Community Family Centre 101 Challis Road Seville Grove ✉ bookings@armadalecfc.com
Raising Babies & Toddlers in a Digital World Monday 18 May 2026 9.30am - 11.30am Communicare 28 Cecil Avenue Cannington ✉ parenting@communicare.org.au 🔗 www.trybooking.com/DKPCS	 Circle of Security® Parenting Wednesdays 20 May - 1 July 2026 9.30am - 11.30am Victoria Park Community Centre 248 Gloucester Street East Victoria Park ✉ parenting@communicare.org.au 🔗 www.trybooking.com/DKPHR
Raising Children in a Digital World Monday 25 May 2026 9.30am - 11.30am Communicare 28 Cecil Avenue Cannington ✉ parenting@communicare.org.au 🔗 www.trybooking.com/DKPIK	 Kids and Anxiety Tuesday 26 May 2026 12.00pm - 2.00pm Minnawarra House 24 Numulgi Street Armadale ✉ parenting@communicare.org.au 🔗 www.trybooking.com/DKPIR
Let's Talk Toddlers Tuesday 26 May 2026 12.30pm - 2.00pm Online (Microsoft Teams) ✉ parenting@communicare.org.au 🔗 www.trybooking.com/DKPIA	 Crow them Up Thursdays 28 May - 4 June 2026 12.00pm - 2.00pm Brookman Child and Parent Centre 26 Brookman Avenue Langford ✉ cpcbrookman@parkerville.org.au

2

May	June
Mealtimes and Fussy Eating Friday 29 May 2026 10.00am - 11.30am Armadale Community Family Centre 101 Challis Road Seville Grove ✉ bookings@armadalecfc.com	'Together Again' Series Tuesdays 2, 9 and 16 June 2026 9.30am - 11.30am Communicare 28 Cecil Avenue Cannington ✉ parenting@communicare.org.au 🔗 www.trybooking.com/DKPJY
Parenting Challenges in a Digital World Monday 8 June 2026 9.30am - 11.30am Communicare 28 Cecil Avenue Cannington ✉ parenting@communicare.org.au 🔗 www.trybooking.com/DKPKN	 Parenting Across Cultures Friday 12 June 2026 10.00am - 11.30am Armadale Community Family Centre 101 Challis Road Seville Grove ✉ bookings@armadalecfc.com
Protective Behaviours Monday 15 June 2026 9.30am - 11.30am Communicare 28 Cecil Avenue Cannington ✉ parenting@communicare.org.au 🔗 www.trybooking.com/DKPRL	 Raising Babies & Toddlers in a Digital World Saturday 20 June 2026 9.30am - 11.00am Canning Bridge Early Learning Centre 113 Roberts Road Como ✉ parenting@communicare.org.au 🔗 www.trybooking.com/DKYEX
Parenting after Stressful Events Monday 22 June 2026 9.30am - 11.30am Communicare 28 Cecil Avenue Cannington ✉ parenting@communicare.org.au 🔗 www.trybooking.com/DKPSS	 Parenting after Stressful Events Tuesday 23 June 2026 12.00pm - 2.00pm Minnawarra House 24 Numulgi Street Armadale ✉ parenting@communicare.org.au 🔗 www.trybooking.com/DKPSS

3

Community News

<p>June</p> <p>Mindfulness and Self Compassion Friday 26 June 2026 9.30am - 11.30am</p> <p>Woodlupine Family Centre 88 Hale Road Forrestfield</p> <p>parenting@communicare.org.au www.trybooking.com/DKQMT</p>	 <p>The Power of Play Friday 26 June 2026 10.00am - 11.30am</p> <p>Armadale Community Family Centre 101 Challis Road Seville Grove</p> <p>bookings@armadalecfc.com</p>
--	--

The South East Metro Parenting Service (SEMPSS) is a free service for parents and carers of children aged 0 to 18. We're here to support you in your role as a parent, no judgment, no pressure. Just real conversations, practical tools, and a team that genuinely cares.

You might like to come along to a parenting workshop, have a one-to-one chat with one of our friendly team, or join a small group to connect with other parents. Whether you're feeling overwhelmed, looking for ideas, or just need someone to talk to, we're here to help.

We cover all kinds of parenting topics including parent-child relationships, attachment, behaviour, communication, emotional regulation, sleep, feeding, toileting, play and development.

We don't claim to have all the answers, but we'll walk alongside you and share strategies you can try in your own way, in your own time.

It's free, local, and designed to support you, because parenting doesn't come with a rulebook.

Join Communicare's online Parenting Community - A safe, supportive online community for local families or if you'd like to find out more or have a chat, we'd love to hear from you.

08 9251 5777
parenting@communicare.org.au





GKR KARATE
KARATE FOR EVERYONE

KIDS KIDSPORT APPROVED CLUB

HOLIDAY PROGRAM
CANNING VALE

WEDNESDAY 15TH, FRIDAY 17TH AND
SUNDAY 19TH JULY 2026 12:30-1:30 PM

COME AND LEARN SELF DEFENCE

\$15 WITH A FREE TRAINING TSHIRT
PH: 0413 716 889




ACE VA PROGRAMS

JSR Anglican Community School

INDOOR VOLLEYBALL PROGRAMS

FREE TRIAL AVAILABLE

TERM 3 REGISTRATIONS OPEN

 <p>ACE KIDS 7-11 YRS</p> <p>1:00-2:30 PM \$229</p>	 <p>ACE JUNIORS 12-15 YRS</p> <p>2:30-4:00 PM \$238</p>	 <p>ACE ACADEMY 12-15 YRS</p> <p>4:00-5:30 PM \$246</p>	 <p>ACE ADULTS 16+ YRS</p> <p>5:30-7:00 PM \$264</p>
---	---	---	--

VENUE: JSR Anglican Community School
DATES: 25 July - 26 Sept, Saturdays

admin@aceva.au 0400 355 357 | www.aceva.au

REGISTER NOW

Winter School Holiday Workshops with LEGO® Bricks



FUN for the Kids More TIME for You

Select School Holiday Workshops
www.Bricks4Kidz.au/Perth-Gosnells

