



# Ashburton Drive

PRIMARY SCHOOL

## 2026 SCHOOL HANDBOOK



6 Nullagine Way  
GOSNELLS WA 6110  
9234 6300

DREAM *BELIEVE* ACHIEVE



# PRINCIPAL'S WELCOME



Welcome to Ashburton Drive Primary School.

We look forward to beginning, or continuing, our partnership with families to ensure academic and social success for all our students. 2026 begins our journey as a Connected Community School.

The Ashburton Drive Primary School motto is 'Dream, Believe, Achieve' and the school song is, 'You Can Do It'. A friendly, positive school tone, with a strong emphasis on teaching and encouraging students to uphold the school values, is driven by the WA PBS program.

Facilities at the school are modern and well-maintained; purpose-built classrooms cater for a Science laboratory, kiln, music room and Auslan (LOTE) room. Students have access to interactive whiteboards, laptops and iPads. The school delivers core curriculum programs following the WA curriculum standards. Specialist staff are employed to deliver Music, Physical Education, Wellbeing programs, Breakfast Club, Choir, Puppets and Clowns and specialised instrumental programs. Our school also offers pastoral care programs including, Boys/ Girls Group and extension programs such as PEAC.

Our school aims to develop responsible, respectful and kind children who are self-motivated to do their best.

Our school vision is 'A dynamic, inclusive, teaching and learning environment, empowering students to achieve personal and academic growth.'

We are a collective of dedicated educators, supportive parents who constitute our P and C and School Board and vital community members, working together to create success for all individuals.

This handbook is written to provide families with information pertaining to Ashburton Drive school life. Other sources of information are included within. Please contact us if you require any clarification on school operations.

Yours sincerely  
Heather Fallo



## CONTACT DETAILS

Phone:	08 9234 6300
Postal Address:	6 Nullagine Way GOSNELLS WA 6110
Email:	AshburtonDrive.PS@education.wa.edu.au
Website:	ashburtondriveps.wa.edu.au
App:	Connect Now
Facebook:	Ashburton Drive Primary School
Principal:	Heather.Fallo@education.wa.edu.au
Deputy Principals:	Sean.Lavery@education.wa.edu.au Jemma.Byrom@education.wa.edu.au Caitlin.Hill@education.wa.edu.au

## SCHOOL HOURS

8:45am School commences

10:55-11:15 Recess

1:15-1:25 Lunch (in class eating)

1:25-1:45 Lunch (play)

2:45pm School concludes

Before school commences, students must assemble on the oval for Run Club, attend the Library or Breakfast Club (Monday, Tuesday and Wednesday). Students will be dismissed by a staff member on duty to their classrooms.

Students must not be on premises before 8:15 am.

OFFICE HOURS: 8:15 am - 3:15 pm

---

## SCHOOL DATES 2026

*Term 1 Monday 2 February - Thursday 2 April*

*Term 2 Tuesday 21 April - Friday 3 July*

*Term 3 Monday 20 July - Friday 25 September*

*Term 4 Tuesday 13 October - Thursday 17 December*

*Student Free/ Professional Development days*

- 29<sup>th</sup> January
- 30<sup>th</sup> January
- 20<sup>th</sup> April
- 14<sup>th</sup> August
- 12<sup>th</sup> October



## SECURITY

*The school is monitored by the Department of Education's central security system. All areas of the school are under 24 hour surveillance.*

*If you witness any suspicious behaviour, including vandalism, please contact School Watch on 1800 177 777 or Police: 131 444.*

## GOVERNANCE

### School Administration

The team is comprised of the Principal, Business Manager and Deputy Principals. All final decisions rest with the Principal, who is responsible for:

- The educational leadership, operation and management of the school
- Delivering education programs that meet the needs of students and are in accordance with requirements of the School Curriculum and Standards Authority Act 1997
- Ensuring the safety and welfare of students on school premises, and away from the school premises but on school activities, so far as can be done reasonably
- Ensuring appropriate standards of academic and non-academic achievement
- Articulating how the financial and human resources will be used to deliver the educational program
- Developing a workforce plan encompassing future needs
- Compliance with all legislation

### School Board

The School Board plays an important role in contributing to good school governance so that school resources are used efficiently, and community expectations and the school's priorities reflect the needs of students.

The functions of the board are covered by legislation and include both approval and advisory roles. Some of the matters boards may make decisions on include:

- fees and charges
- book lists
- sponsorship
- dress codes.

Boards make these decisions with the principal and others relevant decision makers who ensure the decisions adhere to legislative and policy requirements.

Principals may also seek the advice of boards to inform themselves before making management decisions. Board members have the right to understand the principal's decisions (except where they involve confidential information and decisions about people or families).

The board does not intervene in the control or management of the school. This is the role of the principal.

### Parents and Citizens Association

The objectives of a P & C Association are to promote the interests of the school through:

- Cooperation between parents, teachers, students and members of the general community
- Assisting in the provision of resources, facilities and amenities for the school
- The fostering of community interests in educational matters.

## STUDENT COUNCIL

A Student Council is peer elected at the end of each school year for the following year's roles. The Student Councillors are responsible for being good role models for the rest of the student population.

In addition, council members organise and run school assemblies, assist with student fundraising, act as school ambassadors, represent the student body in a variety of ways and help organise special school events such as ANZAC Day and Graduation Ceremonies.

## FACTION CAPTAINS

Faction Captains are peer elected at the end of each school year for the following year's roles. Faction Captains are responsible for being good role models for the rest of the student population.

In addition, Faction Captains organise senior sporting events, Running Club and assist during interschool and school carnivals.



# COMMUNICATING AND ENGAGING WITH THE SCHOOL

## PARENT INVOLVEMENT

Parents are encouraged, welcomed and invited to participate in our school. This can be done in numerous ways including:

- Attending P&C meetings or joining the School Board
- Attending 'welcome back to school' celebration, inductions, carnivals or special events
- Attending class or parent information sessions
- Subscribing to the various forums available for information
- Attending assemblies
- Contacting the school and discussing concerns/ celebrations
- Committing to paying for school voluntary contributions and charges
- Assisting in your child's classroom on special classroom days
- Responding to school surveys



## METHODS OF COMMUNICATION

### ● ASSEMBLIES

Whole school assemblies are held 3 times per term on a Friday morning, commencing at 8.50 am in the undercover area for students in PP to Year 6. Kindergarten students do not attend whole school assemblies until the end of Term 4 as part of transition to Pre Primary processes. Special assemblies will be held to commemorate important events in the history or culture of our country for example, ANZAC Day and NAIDOC.

### ● SMS MESSAGING

This service is used to contact parents for both attendance and general information from time-to-time, therefore it is important your current mobile number and email addresses have been recorded with us.

### ● PARENT LETTERS

Parent letters are a paper-based communication of events that require express written consent for a student to attend. These include incursions and excursions.

### ● WEBSITE

The school's website provides important information about the school. Some features of the website include School Plan, Policies and Booklists.

### ● CONNECT

Department of Education Portal—secure log in. You can access notices and forms. Teachers and Admin will use this as the primary method of sharing what is happening in your child's classroom or other important communications from the school. Please ensure that you advise us of any changes to your email address in order to ensure up-to-date records are kept. Your email address is required for the CONNECT Now App

### ● FACEBOOK

Ashburton Drive Primary School

### ● INTERVIEWS

Please contact the office to make an appointment or email via Connect. A whole school interview day is scheduled in Term 1, the exact date and time will be advertised.

### ● NEWSLETTERS

A school newsletter is published fortnightly. Our school has an electronic newsletter that can be accessed via the internet, mobile phone or iPad. It is also published to the school Facebook page.

### ● TERM PLANNER

Included with the first newsletter of each term is the Term Planner. This highlights important dates during the school terms. Please be aware that slight adjustments to the calendar may occur throughout the term.

# PARENT CONCERN PROCESS



Department of  
Education

Shaping the future




## Connect and Respect Engagement

### Expectations that promote learning, wellbeing and safety in all public schools in Western Australia.

Together we make a difference. We welcome parents and other members of our diverse community into schools across Western Australia. Student learning is strengthened when school staff, parents and carers are actively and positively involved in their education.

We all share a responsibility for providing a safe, supportive and productive environment, free from bullying, harassment, discrimination and violence.

Parents and carers and other visitors to schools support *safer schools* by ensuring communication and conduct at school and school activities is respectful. Every student, staff member, parent or carer has the right to feel safe and be safe at our schools.

3 Respectful engagement	It is expected that parents and carers and/or visitors to our schools will:	06 Parents and carers and/or visitors to our schools demonstrate this by:
<b>Culture</b> 	<ul style="list-style-type: none"> <li>recognise every student is important to us</li> <li>contribute to a respectful school culture</li> <li>promote and model good behaviour</li> <li>work together with staff to resolve issues or concerns</li> <li>respect the right of staff to disconnect from work outside of school hours</li> <li>share responsibility in creating safe and secure learning environments</li> </ul>	<ul style="list-style-type: none"> <li>respecting the diversity of our schools and the right to an education for every child</li> <li>always communicating respectfully about our schools and our staff</li> <li>not engaging in malicious or judgmental gossip in person, in writing, or on social media; about our students, staff and school community members</li> <li>raising concerns early with a staff member, the principal or the Department of Education directly</li> <li>understanding sometimes compromises are necessary, to find an acceptable solution to concerns raised</li> <li>understanding that obstacles, barriers and disappointments are part of the growth journey</li> <li>supporting children and young people to work through difficulties and build resilience</li> </ul>
<b>Communication</b> 	<ul style="list-style-type: none"> <li>be mutually respectful</li> <li>act as positive role models</li> <li>actively help to solve concerns</li> <li>use the school's communication channels and processes to address concerns</li> </ul>	<ul style="list-style-type: none"> <li>appreciating that school staff may not be available to respond immediately</li> <li>knowing that staff will respond to appropriate communication when they are able</li> <li>requesting a meeting to discuss any concerns about your child's education – allowing staff time to prepare and appreciating their time may be limited</li> <li>not using offensive, insulting and derogatory language; and inappropriate conduct</li> <li>being kind when interacting with others</li> </ul>
<b>Collaboration</b> 	<ul style="list-style-type: none"> <li>work with the school to provide a safe and productive learning environment</li> <li>ensure your child attends school ready to learn</li> <li>know and support the school's Student Good Standing Policy</li> <li>schedule meetings at an agreed time, for an agreed purpose</li> </ul>	<ul style="list-style-type: none"> <li>maintaining professional relationships that are open, honest and respectful</li> <li>taking responsibility for your child arriving and leaving school safely on time every day</li> <li>supporting your child to understand and follow the Student Good Standing requirements</li> <li>scheduling an appointment to meet with the teacher or principal</li> </ul>

# PARENT CONCERN PROCESS



Department of  
Education

**Shaping the future**

## Connect and Respect Expectations

**Our schools are committed to providing quality education to all students in a safe, inclusive and caring learning environment. We value working together with parents and families as critical partners in student learning outcomes.**

Schools draw on the diversity and strengths of local communities to create opportunities to work collaboratively and set directions for students. Building mutually respectful relationships with each local community is fundamental to this.

A school community contains a wide variety of individuals and groups who strive to work together to educate students to become confident, well-educated young people; prepared to lead happy, successful lives and make contributions to local and global communities.

School staff will engage with families to understand the interests, personalities and needs of their children. All students need access to a quality education within safe and secure learning environments, and with the right supports to progress and achieve.

There may be times during your child's schooling when additional support is needed, or issues arise. Your school will support you and your child to productively resolve these issues and we encourage you to raise concerns as early as possible.

Shared and respectful expectations and values will enable us to work together in the best interests of our children.

**All students need access to a quality education within safe and secure learning environments.**

### What parents and carers can expect from our schools

Communication between you and your school is an important part of your child's education. School communities thrive on open communication where all students, parents and carers have opportunities to share good news, discuss issues and maintain an open dialogue.

Schools are made up of hard-working and dedicated professionals who will listen, care and respond to your concerns and work with you to resolve any complaints. We have found over time even the most challenging of circumstances can be worked through. You can expect some of the following from your school:

- regular communication through school approved channels
- reports on your child's progress and achievement
- celebration of your child's achievements
- notification of any serious single issue or ongoing issues concerning your child
- scheduled opportunities to meet with the classroom teacher
- other opportunities to meet with the teacher, by appointment
- updates about important developments in your child's class
- notifications or invitations to school events
- opportunities to provide respectful and productive feedback.

## PARENT CONCERN PROCESS

### What parents and carers should not expect from our schools

Our staff have families and personal lives too, and like all professionals, work at their best when they have a quality work-life balance. Parents and carers should not expect:

- school staff to return calls after work hours
- emails to be answered in the evenings or weekends
- access to teachers' private phone numbers or emails
- staff to meet with parents and carers, without an appointment, during a school day
- to be allowed on a school site if you have harassed or been aggressive towards school staff.

### You should contact your child's school if:

- you have concerns about your child's academic or social progress
- medical issues arise or diagnosis changes
- there are changes in family circumstances
- there are safety issues or changes in behaviour at home
- social issues arise that could impact the safety and welfare of students at the school
- you want to make or reschedule an appointment.

### Communication that interferes with teaching and learning

- speaking to staff disrespectfully or aggressively, especially in front of your child or other students
- expecting to meet with staff during the school day without an appointment
- visiting the classroom during the teacher's preparation time before school
- using social media platforms inappropriately and disrespectfully
- malicious or judgmental gossip
- By everyone playing a part in providing safe, positive learning environments and opportunities for our students, we enable them to be the best they can be.

### Communication methods

Electronic communication, such as email, is appropriate for short, non-urgent and positive forms of communication. It is not appropriate for more complex or emotional situations. In these cases, parents should request a face-to-face meeting so that issues can be given the time and attention they deserve. If in doubt, speak to your school.

### Concerns and complaints

Contact your school as early as possible if you have concerns. If you are not sure who to speak to, you can start with your child's teacher. For some matters, it may be appropriate to talk directly to your child's year coordinator, school administration staff or principal.

If you have approached your child's school but haven't been able to resolve the issue, refer to our complaints process to explore your options [education.wa.edu.au/complaints](http://education.wa.edu.au/complaints).

## REPORTING TO PARENTS

ADPS teachers provide feedback to parents about their child's progress, in accordance with the Reporting to Parents Policy. The following timelines for reporting are:

- Term One** Welcome event; and interviews
- Term Two** Formal report, Open night
- Term Four** Formal report

School reports will be provided electronically via 'Connect' to all families. If you require a hard copy of your child's report, please advise the office in writing to [ashburtondrive.ps@education.wa.edu.au](mailto:ashburtondrive.ps@education.wa.edu.au)

## ENROLMENT PROCESS

Enrolments for Kindergarten, Pre-primary and Primary students are processed by the school office and approved by the Principal.

Enrolments are not complete until the following documents have been sighted:

- Birth Certificate
- Deed poll documents, where a child is being enrolled under a name which differs to that on the Birth Certificate
- Medicare ACIR Immunisation Record. A child's immunisations are expected to be up-to-date upon entry to the school
- Proof of address (Water, Land or Shire Rates; Lease Agreement; WA Driver's License; or Utility bill)

ADPS will be notified when a student has transferred to a new school, if it is a government school within the state. It is at this time electronic files will be transferred. Please notify the student's teacher if they are transferring to a new school, so that classroom materials can be collected, library books can be returned and outstanding accounts can be settled (this may include a refund to you).

**It is essential that all medical information is correct and current, and that technology and media forms are completed.**

## IMMUNISATION REQUIREMENTS

### **No Jab No Play - Kindergarten enrolment**

On enrolment in Kindergarten, a child must have either:

1. an Australian Immunisation Register (AIR) Immunisation History Statement, no more than two months old with a status of 'up-to-date'; or
2. an AIR Immunisation History Form, no more than six months old, if the child is on a catch up schedule; or
3. a valid immunisation certificate issued or declared by the Chief Health Officer.

Where a child does not have an 'up-to-date' Immunisation History Statement, an exemption may apply. These exemptions are approved by the Principal.

Where a child enrolling has a Medicare number available, it should be recorded at the time of enrolment.

## ATTENDANCE

The School Education Act 1999 defines school boundaries. Where schools have full classes they have the option and indeed the responsibility to serve their communities by reserving places firstly for local students. This means that places are always available for school aged children residing within our gazetted boundaries. Out of boundary applications for enrolment will be considered on an individual basis. For further information please contact the school.

### Leaving Early

A student is not permitted to leave the school grounds during school hours without the permission of a parent/guardian who is noted on our system. A Leave Pass will be issued to the parent/guardian by the office and a reason for the absence will be recorded.

### Impact on Learning

The link between school attendance and student achievement levels is well established with research showing that students who miss 10% (or one day a fortnight) or more of their schooling are potentially at greater educational risk. The more time students spend at school the more likely they are to experience school success. Poor school attendance can have lifelong consequences.

When children are frequently absent from school, not only is their academic progress delayed, they often miss important interactions with their peers which can lead to social isolation and low self-esteem.

Being late for school impacts student learning and class programs. Mornings for most children are the most productive part of the school day. When students arrive late for school they take time to settle and valuable learning time is lost.

It is important therefore that parents ensure that their children attend school every day, unless they have a valid reason for the absence.

A minimum 90% attendance is expected from all students.

When your child misses just...	that equals...	which is...	and therefore, from Kindy to Year 12, that is...	This means that the best your child can achieve is...
1 day each fortnight	20 days per year	4 weeks per year	Nearly 1 ½ a years of school	Equal to finishing Year 11
1 day a week	40 days per year	8 weeks per year	Over 2 ½ years of school	Equal to finishing Year 10
2 days a week	80 days per year	16 weeks per year	Over 5 years of learning	Equal to finishing Year 7
3 days a week	120 days per year	24 weeks per year	Nearly 8 years of learning	Equal to finishing Year 4

## ATTENDANCE AWARDS

Students who achieve 100% for the year will be recognised at the last assembly. Other incentives are awarded throughout the year. Please see the Attendance policy for details.

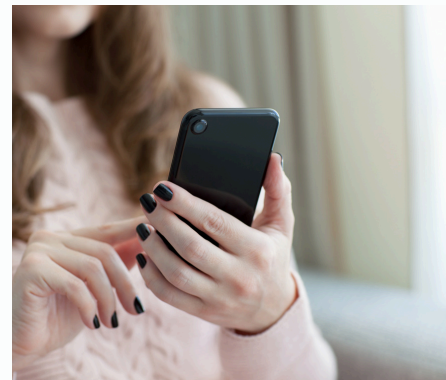
## ABSENCES

As per the School Education Act 1999, all absences must be explained by a parent/guardian, by providing a reasonable explanation for their child not attending school within ten (10) days of the absence.

Parents will be notified by SMS message when their child is absent. This system is automated and relies on the data entered into our school attendance system.

Explanations/reasons can be provided by:

- writing a note
- sending a text or replying to the SMS received
- writing an email to [ashburtondrive.ps@education.wa.edu.au](mailto:ashburtondrive.ps@education.wa.edu.au)
- seeing the classroom teacher in person
- phoning the school
- sending a message via Connect



In most circumstances, the following examples of explanations for school absences are **not** deemed acceptable or reasonable:

- spending time with mother/father/other family members
- helping to look after sick siblings/adults or parents
- celebrating a birthday
- family chores
- family reasons (need to be specified)
- tired

Taking vacation leave during school terms is discouraged. We do understand that finding family time can be a challenge at times. Please forward all vacation requests in writing to the Principal, [AshburtonDrive.PS@education.wa.edu.au](mailto:AshburtonDrive.PS@education.wa.edu.au) outlining the dates your child will be away and the valid reason.

## EMERGENCIES, INJURIES AND ILLNESS

In the event of an emergency, every attempt will be made to contact the parents, guardian or emergency contact person of the child involved. Please ensure your contact details are current and up-to-date. Where parents are unable to be contacted the school will make decisions based on what is in the best interests of the child.

In the event of a head injury or serious injury parents will be consulted. Serious or continued ailments will be reported to parents. All minor injuries and ailments will be dealt with by staff.

## ARRIVING AND LEAVING SCHOOL EARLY

Parents/guardians are to ensure commuting arrangements to and from school have been made clear for your child. Children can become distressed if arrangements are not clear.

When collecting your child please be on-time and make sure your child is aware of the collection point.

To keep our students as safe possible please ensure:

- Pedestrians use the school pathways
- Bicycles are walked throughout the school (from the gates) and parked in the bike racks located near Rooms 13 and 14
- Students in Year 1 and below are collected by an adult
- Students are collected promptly after the final siren. Students are not to remain at school after the final siren

Traffic congestion at the start and end of each day is a major concern for our school. Please note the following:

- The staff carpark is 'out of bounds' at all times
- Do not walk across the staff car park with your child; please use the pathways

If your child walks or rides to and from school, please ensure they are aware of the safest point to cross the roads, utilising the crosswalk attendant where possible. Clearly identified Safety Houses are in the area and should be pointed out to students. These houses are identified by the yellow house sticker on the residents' letterbox. If you live on a pathway to school, please consider signing up for this program.

We do have an onsite before and after school care company for parent convenience.



## SCHOOL PROCESSES

### SCHOOL VISITORS

To make a safe environment for our students and staff, ALL visitors to the school must report to the office. Visitors are required to sign in and wear a badge/ sticker while on the school grounds. All persons other than enrolled students and members of staff are considered to be visitors to the school. The Principal has the primary responsibility for regulating the conduct of visitors on school premises. If a visitor, which includes a guardian, is likely to cause physical harm to, or fear in, a student, staff member or another visitor, (when that other person is on the school premises), then the school Principal may issue a “direction” or “order” as determined by the School Education Act 1999 and Education Regulations 2000.

If a guardian is dropping something off throughout the day, they must report to the office before approaching the classroom.

### MONEY COLLECTION

If money is sent to school for any purpose, please place money and/or permission slip in an envelope, making sure the envelope is completed with your child’s name, room number and what the payment is for (i.e. excursion, voluntary contributions etc). The envelopes are then to be placed in the red money box located in the front office.

Payments can be made via Internet/electronic banking. Please quote the student's name and room number in the description panel. The school's bank details are:

ASHBURTON DRIVE PRIMARY SCHOOL  
BSB 016-358 A/C NO. 3408-78899

EFTPOS facilities are also available at the front office.

### CHARGES AND CONTRIBUTIONS

The Ashburton Drive Primary School Board has endorsed the schedule of Contributions and Charges for 2026. School contributions are required to purchase essential resources for students not provided by the Department of Education. All parents are urged and encouraged to pay these voluntary contributions as soon as possible. Please make payments to the school office. Please direct all queries regarding payment to our Business Manager.

Contributions for 2026 have been set at the following: \$50 for each child.

Ashburton Drive PS is fortunate to have the services of a Chaplain. This is a vital role catering to positive pastoral care. A \$5.00 contribution per student has been approved to enable this successful program to continue.

The P&C charge a voluntary levy of \$10.00, which has been endorsed by the School Board, payable at the front office.

## SCHOOL PROCESSES

### MOBILE PHONES AND ELECTRONIC DEVICES

Mobile Electronic Devices (MEDs) include a range of devices including, but not limited to smartphones, tablets, laptops and smart watches.

The DoE Student Mobile Phones in Public Schools policy bans students from using mobile phones from the time they enter grounds to the conclusion of the school day. This includes smart watches and listening accessories, such as headphones and ear buds.

Mobile phones are not encouraged at school but if a student does bring a phone to school, it must be handed to the front desk in administration building for safe keeping and collected at the end of the day. There is a secure locker for all devices. Students sign in their device. The school does not accept responsibility for lost or stolen devices.

All other electronic devices such as iPads/tablets and electronic games are banned from school. Students are not permitted to take photos or electronic images on school premises without permission from a teacher.

### BIKE ENCLOSURE

A locked bike enclosure is provided for students who ride their bikes or scooters to school and is located outside Rooms 13 and 14. It is essential that students also use an individual bike lock to attach their bikes or scooter to the bike racks as a further deterrent from theft. We strongly encourage all bike/ scooter users to abide by laws and wear their helmet.

Students' bikes or scooters are not covered by school insurance.

### PERSONAL PROPERTY/ LOST PROPERTY

While every care and precaution will be taken, Ashburton Drive Primary cannot accept responsibility for any lost or damaged student property/toys. Students are encouraged NOT to bring valuables of any kind to school and where this is unavoidable; they are to be left with the class teacher.

Please ensure that names are clearly marked on all items of personal property, including clothing and books etc.

A lost property box is kept outside the Library.



## SCHOOL PROCESSES

### DENTAL CARE

Access to dental care is available through Gosnells Dental Therapy on Monday to Thursday from 8.00am to 4.00pm. They can be contacted on 9398 4006. For after hours enquiries, please call 1800 098 818.

### SCHOOL PSYCHOLOGIST

A school psychologist is available to the school. Referrals are made through the Principal or Deputies following discussions with the class teacher and parents. Parental permission is always required prior to psychologist contact with students or the commencement of any individual testing procedures.

### COMMUNITY NURSE

A Community Health Nurse visits our school to carry out periodic checks on children. You will be notified if any of these checks will involve your child and if the nurse identifies any concerns.

### SCHOOL CHAPLAIN

Ashburton Drive Primary is fortunate to have this service through a government grant. The Chaplain is available five days a week to provide students emotional support, friendly advice and positive encouragement in the diverse range of situations that arise for students within the school. The Chaplain can be contacted via the office and referrals can be made via your class teacher or a member of Admin. The Chaplain is available to support parents, staff and students.

### CLASS PLACEMENTS

The allocation of students to classes is a decision that the school takes great care to manage. The principles employed in the formation of classes are as follows;

- Where possible multi-level class numbers will be kept smaller than those of straight classes.
- Space needs to be kept in each class at each year level in anticipation of new enrolments.



Consideration is also given to ensure there is a mix of abilities and gender across all classes. Behavioural matters are considered.

## SCHOOL PROCESSES

### **MEDIA PERMISSION**

The school regularly publishes photographs of students in newsletters and other publications. The enrolment form contains a section for parents to complete to give permission for their child's image and work samples to be published. If circumstances change from our initial request, please contact the school office.

Graduating students need to ensure this is completed for inclusion in graduation materials.

### **INTERNET USAGE**

#### Online Services Account

Our students access the internet as part of their learning programs. The enrolment package contains a section for parents to complete allowing permission for your child to have an online service account. This consent allows your child to access Department of Education approved programs and approved internet sites.

This consent will allow your child to have an education department login and password for access to the school's computers. *If this form is not completed your child will not have access to the schools computers.*

#### Online Services Acceptable Use Agreement

Alongside permission for students to have an online services account, comes the Online Services Acceptable Use Agreement. This agreement is made between a student, parent and the Department of Education. In signing this, students agree to follow the Code of Conduct, while using school devices, accessing internet sites and interacting with others online.

#### Third Party Services

In line with DoE policy, parent permission must be given to specific third party sites that are used at school, which require personal information to be passed to an online company. Information given may be a student's first name, surname, DOB and email address. Specific consent will be sought for your child to access these educational websites and programs.

### **PLAYGROUND AREAS**

Kindy and Pre Primary students are supervised for play and eating within the early childhood area.

Students (Years 1 -6) are seated in the undercover area whilst eating at recess. and lunch.

The north side of the oval is for Years 4 – 6 and the south side for Years 1 – 3.

The quadrangle outside Strickland block is for Years 1-3 students.

The adventure playground (near fitness track) and the blue basketball courts are for Years 3– 6.

The basketball courts and playground areas on Nullagine Way are for Years 1-2.

The area behind the canteen and the Rupe Arts Centre is out of bounds.

## DRESS CODE

Our dress code supports the Department of Education requirement that students attending public schools are required to be dressed appropriately for school activities. A dress code is necessary because it:

- Fosters and enhances the public image of the school
- Provides students with a sense of belonging
- Instils and promotes pride and team spirit in students
- Encourages equity among the students
- Ensures that students are dressed safely for school activities and the environment
- Prepares students for work, as many places have dress and safety codes
- Easily identifies ADPS students when on excursions

### UNIFORM ITEMS

- Maroon school polo shirt
- School faction shirts
- Navy blue track pants, shorts or skirt
- School dress
- Navy blue jacket (polar fleece)
- Year 6 graduation shirt (Year 6 students only)
- Broad brimmed or bucket hat (caps are not acceptable)
- Enclosed shoes (sneakers or school shoes are recommended)

Please note:

- Bike pants and leggings may only be worn under a skirt or shorts.
- Denim or denim look-alikes are to be worn.

Under the Education Act, students can be prevented from participating in certain activities if their hair style is considered to be hazardous. Students with long hair need to have it tied back and it should not obscure their vision. Body piercings are not accepted at school due to their potential danger. Studs or sleepers in the ear lobes are permitted but dangling type jewellery or earrings are not considered safe and are prohibited at school.

Nail polish and make up is not appropriate for primary school students. Students will be asked to remove it if they wear it to school.

Faction shirts are available for students to wear during sporting events and on Fridays. Students will be allocated to a Faction.

Contact the school office for further information regarding the uniform policy, Uniform Shop, current prices and/ or clothes available.

## FACTIONS

Our faction houses are named after rivers in WA. They are also the names of streets within Gosnells.



The De Grey River is a river located in the Pilbara region of Western Australia. It was named on 16 August 1861 by the explorer and surveyor Francis Gregory after Thomas de Grey, 2nd Earl de Grey who was, at the time, President of the Royal Geographical Society.



The Gascoyne River is a river in the Gascoyne region of Western Australia. At 865 kilometres, it is the longest river in Western Australia.



The Fortescue River is an ephemeral river in the Pilbara region of Western Australia. It is the third longest river in the state



The Murchison River is the second longest river in Western Australia. It flows for about 820 km from the southern edge of the Robinson Ranges to the Indian Ocean at Kalbarri. The Murchison-Yalgar-Hope river system is the longest river system in Western Australia.

## HEALTH AND SAFETY

### *Informing the School of Medical Conditions*

*It is important to notify the School if your child has a medical condition which may affect their daily health and wellbeing.*

*Medical conditions may include, but are not limited to allergies, wasp/bee stings, asthma and diabetes.*

*Where appropriate the School will work with you to develop an appropriate Health Care Plan for any medical condition your child may have.*

### **ALLERGY AWARE POLICY**

To minimise the risk to students who have anaphylaxis, the School has implemented an “Allergy Aware” Policy. Anaphylaxis is a severe allergic reaction that can be life threatening. The most common allergens in school aged children are peanuts, eggs, tree nuts, cow’s milk, fish and shellfish, wheat, soy, sesame and certain insect venom (particularly bee stings).

The key to prevention of anaphylaxis in schools is knowledge of the student who has been diagnosed at risk, awareness of allergens and prevention of exposure to those allergens. Partnerships between schools and parents are important in helping the “at risk” student avoid exposure. The policy is within the ADPS Health Policy.



## HEALTH AND SAFETY

### MEDICATIONS

ADPS has a comprehensive policy on providing children with medications at school.

Parents requiring children to receive any medication at school, whether this is for a short time or on an ongoing basis, must provide the school with appropriate authorisation and/or instructions. The office has a form for this purpose.

Students who need to take ongoing, daily medications will be able to access these from the office.

Students will only be issued medications by one of the school administration team under the written authority of parents.

If parents require the school to take emergency actions for known conditions affecting their child(ren) they should contact the school to develop an Action Plan, to ensure appropriate action is taken if a situation requires it.

### HEALTH CARE PLANS

Where appropriate the school will work with you to develop an appropriate Health Care Plan for any medical conditions your child may have. You will need to first develop a proposed plan for the school to review. Once you have returned the plan the Principal will:

- Review the plan (s) to ensure the school is able to provide the necessary support;
- Arrange staff training if required to support your child;
- Ensure plans are implemented, monitored and reviewed annually;
- Manage the confidentiality of your child's health care information; and
- Provide appropriate storage for medication and health equipment.

Forms are available for common conditions. For other conditions the generic health care form or a plan provided by a medical practitioner can be used. The following plans are available:

- severe allergy/anaphylaxis;
- mild and moderate allergies;
- diabetes;
- seizure;
- asthma;
- personal care activities;
- administration of medication;
- emergency response plan for students with special needs; and
- generic health care plan (for all other conditions).

Forms can be obtained from the school office.

## HEALTH AND SAFETY



### HEAD LICE

Head lice are a common occurrence in all schools. Parents will be advised should their child be found to have head lice and will be asked to treat the infestation before returning to school. Regular checking of hair and treatment when infestation occurs is the best way to address head lice and to keep long hair tied back.

### INSURANCE

The Department of Education does not provide personal or property insurance for students both at school or when participating in educational activities away from the school site (except for excursions involving an overnight stay). It is the responsibility of parents to ensure that their children are adequately covered by insurance for accidents that are not caused through defects of negligence on the part of an employee of the Department.

### EXTREME WEATHER PROCEDURES

Where possible students will have their usual recess and lunch breaks; however, during extreme weather conditions, students will remain inside their classrooms under teacher supervision. Students may access the toilet as the need arises.

In extreme heat conditions, students will be restricted to shaded areas and sport activities will be prohibited during the recess and lunch breaks. Furthermore, Physical Education classes may be impacted; the specialist teacher will provide educational alternatives.

## HEALTH AND SAFETY

### ANIMALS ON SCHOOL PREMISES

In accordance with the Department of Education regulations, dogs are prohibited from being on school grounds, irrespective of the size of the dog or whether it is on a leash. This decision is made with the need to ensure the safety of students.

In special circumstances some pets are permitted for educational reasons; for example Story Dogs. The Principal will make this decision.

### SMOKING, VAPING AND ALCOHOL ON SCHOOL GROUNDS

In accordance with the Occupational Health, Safety and Welfare Act, 1987 smoking, vaping and alcohol are prohibited on school grounds. This includes during sports carnivals and other activities.



### SUN PROTECTION

The School's Sun Protection Policy has been adopted to ensure that all staff and students are protected from skin damage by the sun's harmful rays and requires students to wear hats whenever they are outside. Students must wear a hat whilst in the playground and playing sport. Where students fail to wear a hat, they will be directed to the undercover area or atrium area. The school requests that parents support this Policy by ensuring their children bring appropriate hats to school in accordance with the Dress Code Policy.

The Cancer Council of WA recommends that students wear broad-brimmed, bucket (minimum 6cm brim) or legionnaire style hats whenever they are outside. Caps, beanies and sun visors are not accepted as they do not provide adequate protection.

## HEALTH AND SAFETY

### PARENT PARKING

It is requested that parents respect that the staff car park is for **STAFF CARS ONLY**. It is far too dangerous an area, with such a large number of cars, for the safety of our students to be assured. The staff car park is a pedestrian free zone.

Please use the footpaths to make your way to the entrance gate. It is understood that dropping off children to school can present a problem, so here are a few simple steps to make drop off time that little bit easier:

- plan where you are going to drop your child off
- always drop your child on the school side of the road
- always ask your child to leave the car on the kerb side of the road
- be considerate of other drivers, pedestrians, cyclists and local home owners/residents

Parking across service entrances is prohibited, as it causes great inconvenience to trades people and delivery vehicles, who regularly visit the school. The entrances are also used for emergency access to the school.

Marked '**Bus Only**' bays located in Nullagine Way are reserved for day care buses/vehicles. There are also often school excursion buses returning at the end of the day.

Please be considerate of our neighbours by avoiding driveways and lawns.

### SCHOOL PLAYGROUNDS

Due to legal duty of care issues, children are only permitted to play on equipment in the school when staff are supervising. Toddlers and students are not permitted to play on the equipment before and after school or during assemblies or sports carnivals.



## POSITIVE BEHAVIOUR

### WA PBS

WA PBS (Western Australian Positive Behaviour Support) is a program that helps to identify and implement school-wide Positive Behaviour Support to:

- \* improve behaviour, teach social skills and foster a positive attitude toward learning
- \* achieve higher educational outcomes
- \* provide a common language and understanding that is used by all



There is a WA PBS Parent Booklet available at the front office. This booklet provides comprehensive information pertaining to all school procedures regarding positive behaviour.

## BEHAVIOUR SUPPORT POLICY AND PROCEDURES

Department of Education (DoE) schools provide every student with the educational support the student needs to learn and maintain positive behaviour.

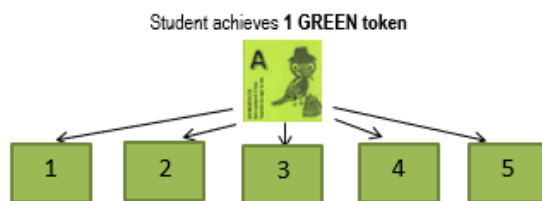
ADPS seeks to implement this through WA PBS, consistent and clear expectations and a school-wide approach to managing and responding to unproductive student behaviour utilising a multi-tiered support framework.

The ADPS Behaviour Support Policy is available on the school website or from the office.

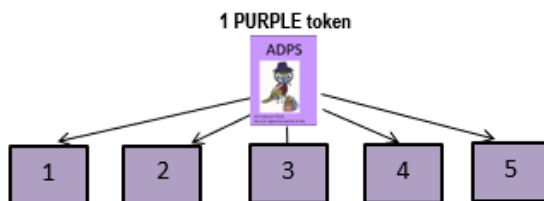
The infographic to the left explains the main reward process utilised.

### Positive Rewards Program

At ADPS we use "Class Dojo" to constantly reinforce positive behaviours. For every 10 Dojo points students receive an Ashburtoken. Specialist staff are linked to classes and relief staff can hand out "Dojo tokens" which will be added to the points tally by the class teacher at a later time. Dojo tokens can also be given to students at lunch and recess breaks to be handed to their class teacher for processing.



When 5 GREEN tokens have been achieved they are placed in the class pencil case, then they come to the office for an entry in the "Green Token Tree" daily prize draw and are exchanged for



When 5 PURPLE tokens have been achieved, they are placed in the class pencil case and taken to the office for processing. Plus all students receive a

TRY-ATHLON Certificate at assembly.



When 5 TRY-ATHLON certificates have been achieved, students receive a MEDALLION. |

- 5 x TRY-ATHLON certificates = **Bronze Medallion**
- 10 x TRY-ATHLON certificates (total) = **Silver Medallion**
- 15 x TRY-ATHLON certificates (total) = **Gold Medallion**
- 20 x TRY-ATHLON certificates (total) = **Platinum Medallion**
- 25 x TRY-ATHLON certificates (total) = **Plaque**

*Try-athlon certificates are recorded at school but sent home.*



It is important for families to know that green Ashburtokens **MUST be kept and brought back to school** if they accidentally make their way home.

Purple tokens are issued by staff. **These must also remain at school.**

Once 5 x purple tokens have been accrued, students are issued with a Try-athlon certificate.

Once your child has 5 Try-athlon certificates, please bring them to the office so your child can be presented with the appropriate medallion.

Try-athlon certificates and medallions are recorded on the school system. As such, they are taken home to celebrate with family members.

# PERSONAL BEST

## Personal Best

Personal Best is a great way to say ...

**"You are doing great at school. Let's celebrate your good values and behaviour!"**



Our school community values people who can show that they...

Act Responsibly  
Do their best  
Participate Positively  
Show care and respect



What is 'Personal Best'?

Personal Best is a school wide reward system for those students who:

- have shown good behaviour.
- have demonstrated the school values.
- a way to provide feedback on how your child is developing in the areas of school expectations as well as personal and social development.

What happens if my child is in the 'Personal Best'?

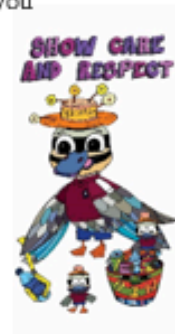


If your child is eligible for Personal Best your child is entitled to participate in an activity just for the **Personal Best** members. While we keep costs to a minimum, you may be required to pay some costs associated with the reward activities.

How does my child get into 'Personal Best'?

The guidelines are:

1. All students complete a nomination, Personal Best form. Students self-reflect by giving themselves a score against each criteria.
2. Classroom teachers score students against each criteria.
3. If the teacher's score is at or above the required level administration will check that students have:
  - less than two incidents resulting in detention
  - no withdrawals or suspensions
4. Students who are confirmed as demonstrating our values, as above, will be notified via a letter for parents.



## INCURSIONS AND EXCURSIONS

All incursions and excursions are planned educative experiences. We endeavour to provide parents with four weeks' notice of excursions. Students will bring home a hard copy of the excursion information and permission slip. A soft copy is also available on Connect.

Each class budget remains within the advertised *Charges and Contributions* thresholds.

Students are expected to wear school uniform to all excursions, except camps or environments requiring other clothing. This is to ensure the safety of our students. Any other stipulations will be communicated in the permission note sent home with students.

In the instance of inappropriate behaviours displayed by a student, a case management approach will be taken to ensure risk management procedures are fair and ensure the safety of all attendees. This may take the form of the parent being asked to attend and accept duty of care or in extreme circumstances the student may be excluded from attending. The Principal shall have responsibility for this decision and will communicate with parents/guardians.

## GRADUATION

### **Pre Primary**

Pre Primary students have a short celebration towards the end of Term 4. Students are presented with certificates and enjoy some time with family.

### **Year 6**

Graduation is a special time of the year for our senior students where there are special events organised to celebrate the transition to high school. It is student responsibility to behave in accordance with school expectations. At the end of the year there are a number of special events that are a privilege to attend. Students must have 'Good Standing', as outlined in the Behaviour Support Policy, in order to qualify.

## TRANSITION

### **Kindergarten**

New Kindy students and parents attend a series of sessions in order to familiarise students with school life and inform parents of school processes. These sessions are invaluable and we highly recommend attendance.

### **Kindergarten and Pre Primary**

Current Kindy and Pre Primary students have an opportunity to move to different locations within the school in expectation of the coming year.

### **Year 6**

Various opportunities are provided by high schools for students to visit and parents to attend information sessions. These events are advertised as they become available.

## PERSONAL REQUIREMENTS

### CLASSROOM EQUIPMENT

The list of items for personal use will vary from year level to year level and includes:

Requirements used in lessons, e.g. stationery items, calculator, etc.

Requirements recommended but not essential for all students, e.g. tissues, art shirt, etc.

All materials can be purchased through Office Works; however, you are not obliged to use this supplier. In addition, the supplies are pre-packed according to individual orders and delivered to home addresses. Orders must be placed by 6th January. The price given is for online orders only.

Booklists are available to be downloaded or viewed on our website.

Your child will need to have the listed materials each school day and it may be necessary to replace some items, such as pens or pencils, throughout the year.

Following are some considerations for parents:

- School bag (large)
- Drink bottle for water
- Lunch – please send a nourishing lunch with your child. We encourage children to eat a healthy lunch so please discuss with your child their likes and dislikes to avoid undue distress.
- Fruit – children are encouraged to bring fruit for morning tea.
- Brimmed hat (clearly labelled with your child's name).  
*Children MUST bring a hat every day*
- Shoes (closed in such as joggers suitable for climbing).
- Spare change of clothes in the school bag (Early Childhood students)
- Library bag (the uniform shop has bags for sale if you wish to purchase one.)

### CRUNCH AND SIP

The Crunch & Sip program is an easy way to help students stay healthy and happy!

Crunch & Sip is a set break to eat fruit, salad or vegetables and drink water in the classroom. Students re-fuel with fruit or vegetables during the morning and/or afternoon, assisting physical and mental performance and concentration in the classroom. This is especially important with our long morning session.

## SCHOOL SERVICES

### UNIFORM SHOP

The Uniform Shop is located next to Unit 4 in the Early Childhood area.

It is open on Fridays from 8:15 - 9:00.

Reversible hats are also available for purchase. These have the school colour on one side and the faction colour on the other.

There is a small second hand selection within the shop. If you would like to make a donation of items, please leave them at the front office or hand to Uniform shop volunteer when open.

## PARENTS AND CITIZENS

The Ashburton Drive Primary School P & C Association is a voluntary body that meets once or twice a term. The committee liaises directly with the school administration team.

The P & C is responsible for organising fundraising activities and therefore decide how raised funds can best be spent to support the school, in consultation with the school.

All parents are welcome and encouraged to attend P & C Meetings. Current contact details are published in a newsletter early in each new school year. The P&C also has a Facebook page **Ashburton Drive Primary School P&C**.

Planned events are advertised in Newsletters, via class Connect pages and on the school Facebook page.



## BEFORE AND AFTER SCHOOL CARE

### OSH Club

Our school is contracted to OSH Club for before and after school care.

Information is available at the front office.

To contact OSH Club please call 1300 395 735 or Website: <https://www.oshclub.com.au/>

## COMMUNITY USE OF SCHOOL FACILITIES

It is the policy of the Government and the Department of Education that school facilities and resources are made available for use by the community. These activities must not interfere with school operations.

Applications for use of school facilities and resources must be approved by the Principal and formalised through a written agreement signed by the school Principal and a representative of the user group.

A hire fee may be charged, which will be determined by the Principal in consultation with the School Board.

Connected Community Schools Trial 2026 -2030. We are one of 4 schools selected to be part of this project. We have been granted funding to create a community hub that links students, families and community to a range of essential services and activities to improve student outcomes and post-school opportunities.



---

## LEARNING ENVIRONMENT

Physically our school is very well equipped.

Our undercover area is equipped with a sound system, media player and large screen. We also have a set of choir risers and a demountable stage. This equipment allows for visual presentations to large groups during assemblies and special events.

Outside, the school has large play areas, basketball courts, netball courts, tennis courts and an oval. The school is enhanced by the many beautiful gardens which allow the students alternative play and quiet areas. We have established a seasons Nyoongar garden and frog pond (with the very generous help of SERCUL) to illuminate the importance of sustainability. We also introduced logs in the Early Childhood area and on the fitness circuit for 'nature play' experiences. Some areas have been refurbished for 'outdoor classroom' use. There is a shaded outdoor classroom space between the junior and middle blocks. A new playground was installed at the end of Term 3 2025.

## TECHNOLOGY

Students have access to numerous systems to enhance learning opportunities. iPads in the Early Childhood and Green Block. Strickland students have access to a bank of laptops and a class set of iPads. Draffen students enjoy two banks of laptops, and a class set of iPads. We are currently moving towards being an iPad school.

Every classroom has an interactive whiteboard installed and the library has a large screen projection unit.

We endeavour to create contemporary learning experiences with the use of these devices.

## LIBRARY

We recognise the value that books have in every person's life. The library was refurbished in 2019 to ensure that it is user friendly, bright and inviting.

The library also houses the Gnarla Yindyamarra (Our Respect) Room. This room provides a safe place for meetings, small group support sessions and 1:1 counselling.

The Library is open each morning for students to exchange their Home Readers. Please encourage your child to do this each morning.

**We strongly encourage children to read or be read to everyday.**

## SWIMMING INSTRUCTION

The Department of Education conducts swimming lessons during school time for PP - 6. The lessons are conducted every day over a two week period. There are no charges for instruction; however, pool entry and transport fees are required to be paid if children are to participate. Swimming is a valuable skill and it is expected that all children participate.

**Swimming in 2026 is Term 4, Weeks 3 and 4.**

## RUNNING CLUB

All students are invited to attend school at 8:15 - 8:35, on the oval, for Run Club to enhance their fitness levels. We love it when our parents join us too!

Each participant has a card which is scanned by our amazing faction leaders for each lap run or walked. At the end of the session it is highly recommended that students place their cards back in the boxes provided.

Student achievement is acknowledged via PA Assemblies as milestones of 100km and above are reached.



## BREAKFAST CLUB

Breakfast Club is offered to all students and is available between 8am and 8.35am every morning in the undercover area. There is no charge for Breakfast Club.

## AUSSIE OF THE MONTH

At designated assemblies, one student in the school receives the Aussie of the Month award. Teachers nominate students who have displayed positive behaviour towards others as per our WA PBS matrix and reflects the universal values we share as Australians, such as fair go, mateship, respect and inclusion. Members of the Admin team choose the recipient.

## PUPPETS AND CLOWNS

Our very talented music teacher runs a PuPPets aNd CLoWns program for selected Year 4 and 5 students. Students self-nominate and audition for a place in the program. Performances are programmed for both school and public events, these are advertised through our various communication methods.

## CHOIR

We have a senior (Years 4,5 and 6) choir. Performances are scheduled both in school and for public appearances as permitted. Year 6 choir members also present an item at the Graduation assembly.

## DANCE TIL U DROP

Term 2 is highly anticipated as students enjoy dance classes. Dance is not only for the physical skills on offer but is also a confidence-building venture.

All students participate in every class. Sometimes, classes are combined, or split year groups can be moved to be with their year cohort. Performances are held on the afternoon of our 'Open Night'. Unfortunately, all students and their parents cannot fit in the undercover area at the same time. Therefore, we have two concerts and 'Open Nights' to cater for our eager audience.

## COMMUNITY AWARENESS

Year 6 practise their entrepreneurial and citizenship skills by designing, building, creating and selling their wares at our whole school fundraising day. This is similar to a fair and is held in the undercover area with food to purchase, games to play and activities to delve into. Money raised is donated to different organisations where there is a community need and Year 6 students vote on a school need. Past donations have been to the Cancer and Leukaemia Foundations and Salvation Army.

This is not just a fun day for students. There are activities and, when available, guest speakers are invited to each block to teach our students the value of 'giving back' to the community. Each year has a different theme such as 'Sustainability and Poverty'.



## ENDEAVOUR AWARDS

At the end of the year a special assembly is scheduled for our Endeavour Awards.

Kindergarten to Year 5 teachers present a certificate and a book to one person in their class who has exemplified the values of Ashburton Drive Primary School for the year. Year 6 Award recipients are announced on their graduation night.

This is also the assembly where 100% attendance awards are presented, and the new councillors and faction captains are announced.

## EARLY CHILDHOOD

The Early Childhood years are where children develop the skills, concepts and understandings necessary for success at school. It is an exciting time of discovery and learning.

The Kindergarten classes follow the Early Learning Years Framework and work towards the National Quality Standards (NQS). There is a strong focus on early literacy and numeracy development. Educators provide opportunities for a balance of play, deliberate and intentional learning and spontaneous experiences and interactions. Students will also be exposed to activities which develop their fine and gross motor skills.

As Kindergarten children attend 15 hours per week, the Kindy days will be split into five days a fortnight with two days one week and three days the alternate week. Kindy students will attend school for full days from the start of the year.

### TOILETING

When your child begins kindergarten, your child needs to be able to go to the toilet independently.

This means your child is able to:

- realise when they need to go to the toilet,
- remove their pants and pull their pants up,
- wipe their bottom and flush the toilet,
- wash their hands after using the toilet.

Accidents do happen, and the teaching staff are there to help, but your child needs to be developing these skills independently.

Please pack a change of clothes daily in case of accidents.

### SOCIAL/ EMOTIONAL

The first day of Kindergarten can be an anxious time for both you and your child. Preparing your child for Kindergarten by answering all their questions honestly and in as much detail as they can understand can help prevent potential anxieties.

Here are some tips to get ready for starting school.

- Read stories with your child about starting school.
- Go past the school and talk to your child about how they will soon be going there, the exciting things they will do and the friends they will make.
- Check that your child can open and use their lunch box and drink bottle by themselves and help them to practise this.
- Explain who will drop them off and then pick them up when school has finished.

## EARLY CHILDHOOD

### EARLY CHILDHOOD - TEACHER'S ROLE

To follow NQS practices and the ELYF Curriculum

To develop in students the following skills and attitudes:

- o A healthy and realistic self-concept;
- o Independence and self-confidence;
- o Self-control and discipline; and
- o Self-initiative and willingness to try.

To provide a safe, clean and stimulating environment.

- To communicate with parents regarding their children, Early Childhood Programs and school and Department of Education policies and procedures.



### EARLY CHILDHOOD - PARENT'S ROLE

- Attend meetings to become familiar with the operation of our Early Childhood Program
- Familiarise with the role of the Parents and Citizens' Association and School Board
- Ensure your children attend school on a regular basis and give notice of absences within 10 days.
- Keep in touch with your children's teachers on matters concerning your children's health and wellbeing.
- Bring and collect your children on time.
- If you wish your children to be collected by someone other than yourself, please notify staff with written confirmation.
- If the need arises to collect your child during the day, a form must be completed at the school office. This form is then handed to the teacher.
- At the end of day, we ask that you wait outside your children's classrooms until the session ends and to collect them promptly. Many children of this age find it a very upsetting and frightening experience if their parents arrive late to collect them.
- Do not allow your child to play on the equipment before or after school.