

# Ashburton Drive Primary School

DREAM • *believe* • ACHIEVE



## Principal's Address

### Dear Parents/Caregivers

Welcome to the 2021 school year. I would like to welcome all of our returning families for the new year and also all of our new families to the school. We were very excited to meet our new Kindergarten students and families who are all attending on Wednesday, Thursday and Friday. We have had an increase in Kindergarten enrolments and are at capacity! Our PP to Year 6 students are well-settled in their new classes and already hard at work. The less said about the start to our school year the better, except, let's hope we have no further interruptions. Thank you for following the guidelines for the first day of school. This enabled all parents to have the opportunity to spend time settling their child in their new class. Many exciting events and challenges are in the planning for 2021 and are added to the school planner. Throughout the year, other events will be organised and will be updated on the planner. Connect will continue to be the primary, communication forum.

### Staffing

We extend a huge welcome to our new and ongoing staff members. Some staff members have accepted new challenges with different roles and responsibilities.

- Welcome to Caitlin Hill, our wonderful Year 4/5 teacher.
- Miss Rachel Hawkes is now our PE specialist for Strickland block students and coordinator extraordinaire for all sport events.
- Miss Helen Downie has continued her well-being role but has also returned to us as an Education Assistant in Kindergarten.
- Mrs Tracey Wood is now our PP/1 Teacher in room 4.
- Mr Brett Whiskin remains one of our deputies for two days a week managing IT and has two days of teaching, as the Measurement specialist.
- Mrs Tamara Kelly continues as the Students at Educational Risk Deputy.
- Mrs Keira MacLachlan continues as our Curriculum Deputy.

### School Leaders

Well done to our wonderful school leaders for 2021, Councillors and Faction Captains, on your first assembly. This group are already proving to be particularly responsible citizens who show initiative.

## Ashburton Drive Primary School

6 Nullagine Way Gosnells Wa 6110

Phone: 9234 6300

[www.AshburtonDrive.PSeeducation.wa.edu.au](http://www.AshburtonDrive.PSeeducation.wa.edu.au)

### School Hours

**Monday - Friday**

**8.45am - 2.45pm**

**Recess: 10.55am - 11.15am**

**Lunch: 1.15pm - 1.45pm**

**Final Bell: 2.45pm**

### Dates To Remember

**Office Display - 12th February  
Unit 4**

**Assembly - 26th February  
Room 6**

**Office Display - 26th February  
Room 17 & 18**

**Newsletter - 26th February  
LOTE**

**Public Holiday - 1st March  
Labour Day**

**Office Display - 12th March  
Unit 3**

**Assembly - 12th March  
Room 16**

**Newsletter - 19th March  
Unit 4**

## WA PBS Values

Ashburton Drive are entering our 8th year of utilising the WA PBS Framework. We have witnessed great success with instilling our values: Act Responsibly Do your best Participate positively Show care and respect. Our 2020 – 2023 Business Plan prioritises this program as we begin the journey to Tier 2 WA PBS. The common language developed within this framework is in full use across the school and we are very grateful to Miss Elizabeth Davies for continuing her role of WA PBS Leader. Miss Davies has revitalised the program and ensures all process and practices are completed with excellence. This is very much in-line with our School Vision:

**'A dynamic, inclusive learning community striving for excellence'**

## School Start and Finish Times

Classes start each morning at 8.45am and finish at 2.45pm. Please ensure your children are here on time and picked up on time. Arriving late and being left to wait after school can be stressful for your children and cause them anxiety. Children should arrive at school around 8.30 and be collected at 2.45 pm, unless they are involved in Run Club. If your child arrives at school before 8.30 they need to either wait under the shelters on the oval or join in during Run Club or read in the library. This is to ensure that they are safe.

*Parents who accompany their children at this time also need to comply to assist staff in their Duty of Care requirements.*

Children will be sent to classes at 8.35 to prepare for the school day. Please also note that in the morning, teachers are busy settling your children in and setting up for the school day so this is not always a good time to talk to them in depth unless the matter is urgent. Teachers are available after school or at other times by appointment – please make contact by email, Connect, phone us or drop by the office if you need an appointment and we will pass a message on.

## Parent/Teacher Contact and Home/School Communication

The relationship between the home and the school plays a very important part in a child's education. We cannot overestimate the critical role parents play in successful learning; parents contribute much to their child's development and are the most important influences on the way in which the child approaches learning. Teachers are responsible for the more formal aspects of children's learning, and successful teaching builds on the home experiences of the child. This is most effective where there is an active partnership with parents. Two-way communication is a critical factor in the partnership between parents and the school. Where a partnership exists, it is easier for parents to feel confident about the teaching and learning taking place in the classroom and to solve problems. Please help us by:

- Keeping your contact details up to date in the school office
- Checking Connect for any messages
- Keeping the teacher/administration informed of any issues or changes that may impact your child at school
- Talking to your child's teacher if you have any questions or concerns
- Talking to the Principal/Deputy Principal if you have any questions or concerns
- Signing in when on school grounds
- Returning permissions which are sought for various reasons

The school and the Department of Education have clear steps to guide parents in the resolution of problems and concerns and copies of this are available in the school office. However, if you are not sure what to do please don't hesitate to contact me if you have concerns.

## Parent Information Meetings

Class teachers have commenced parent meetings. This is a good time to meet the teachers, get information about what programs will run in your child's class this year and ask questions. More information will be sent out via Connect if it hasn't already done so.

## **Positive Behaviour Support Focus Term 1 Weeks 4 and 5 is “Follow the School Dress Code”**

Please support us by discussing this with your children and encouraging ‘Show care and Respect’.

### **Connect**

Please ensure your email address is provided to the front office. Our secure communication system is up and running but requires current emails. If you are having any issues connecting to Connect please inform us.

### **Uniform**

It is fantastic to see so many of our children in uniform for the start of the year – this helps us to create an environment where everyone belongs and fits in! The school now runs the Uniform Shop but our lovely Katie Peos remains as the organiser queen.

### **Hats**

For health reasons, students are required to wear a sun safe hat (broad brim, bucket or legionnaire style) for breaks and outdoor activities. Students without hats will be restricted to playing in the undercover area. The Uniform Shop stock fabulous reversible hats available with the school colour and the faction colour.

### **P & C**

We have a wonderful P & C (Parents and Citizens) group who help us with many special events and with fundraising for special projects. This group needs your help. Please keep an eye out for information about the first meeting and come along if you can!

### **Absences**

Parents are required to notify the school in advance of any planned, extended leave (i.e. vacations). It is also a requirement that any unplanned leave (illness/emergency) is explained as soon as is practical. This can be done in a number of ways, including:

1. Letter/Diary Entry to the teacher;
2. E-mail to [ashbburtondrive.ps@education.wa.edu.au](mailto:ashbburtondrive.ps@education.wa.edu.au)
3. Phone call to the office on 9234 6300
4. A response to our SMS alert
5. Via Connect

Staff from the school will be making contact with families when students have missed three or more consecutive days without explanation, to ensure your child is not slipping unnecessarily into the academic risk categories associated with poor attendance.

### **Parking/Student Pick Up**

Parents are reminded, wherever possible to park/pick their children up on the school side of the road. Avoid asking your child to cross the road unattended, especially between parked cars. Parking on private property or a verge opposite the private property is unlawful unless the property owner has given permission. Don't risk getting a fine, and we ask all our parents to be considerate of the residents who live around our school. Rangers at the City of Gosnells use the City's Parking Local Law 2012 to ensure parking around schools remains safe, lawful and allows traffic to flow. Don't risk a fine for parking illegally – many parking infringements are \$100. If you can't find anywhere around the school, consider parking further away and walk the rest of the distance. Better still, if it's possible, leave the car at home and walk or cycle to school to improve your health and reduce congestion on the roads. Walking students through the staff car park is unnecessary and unsafe. There is a pathway directly alongside the car park on either side.

## Student Medications

Parents of students requesting medication to be administered during school hours must complete an “Administration of Medication” form available at the school office. Approval is required from the Principal before any medications are administered by staff. Under no circumstances are students permitted to ‘self-medicate’ during the school day.

## Allergies

We have some students who are highly allergic to nuts, eggs and other food products. It would be appreciated if you could speak to your children about the importance of not sharing food and washing hands both before and after eating. The children concerned would be most grateful.

## Camp Australia Before and After School Care

The Outside School Hours Care program at Ashburton Drive Primary School provides time for homework, time to relax, educational activities and a healthy snack. Best of all, our program makes time for kids to be kids – to play and explore, share with friends and enjoy these precious school years. It’s free to register. For more information on our services and fees, please visit our website: [www.campaustralia.com.au](http://www.campaustralia.com.au)

## Parent Contributions

The 2021 parent contribution for Kindergarten to Year 6 is set at \$55 per student. Contributions collected are approved by the School Board and will go towards:

- Contributions \$40.00
- Chaplaincy contribution \$5.00
- P&C contribution \$10.00

Payments options are outlined below:

- OPTION 1     Cash – A cash payment can be made to the School Administration Office, using the gold envelopes available at Reception (clearly marked with student’s name)
- OPTION 2     EFTPOS  
EFTPOS – facilities are available at the School Administration Office
- OPTION 3     Electronic Funds Transfer  
Account Name: Ashburton Drive Primary School  
BSB: 016 358  
Account No. 3408 78899  
Reference: \*Students Full Name

## Dental Therapy Centre

The dental therapy centre is open Monday to Wednesday from 8am to 4pm.

Gosnells DTC – Dental Health Services  
Gosnells Primary School  
173 Hicks Street Gosnells WA 6110  
Ph: 9398 4006

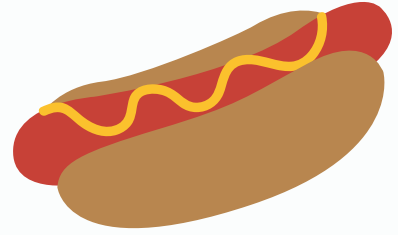


## Wednesday Sausage Sizzle

The room 14, Year 5's will be running a sausage sizzle each Wednesday to fundraise for the special events held throughout the year. These include, but are not limited to, Harmony Week, NAIDOC Week and Anti-Poverty Day.

Should you wish to order a sausage sizzle for your child, please fill out an order form in your child's classroom with student's name, room number, number of sausage sizzles and whether sauce and a drink is required.

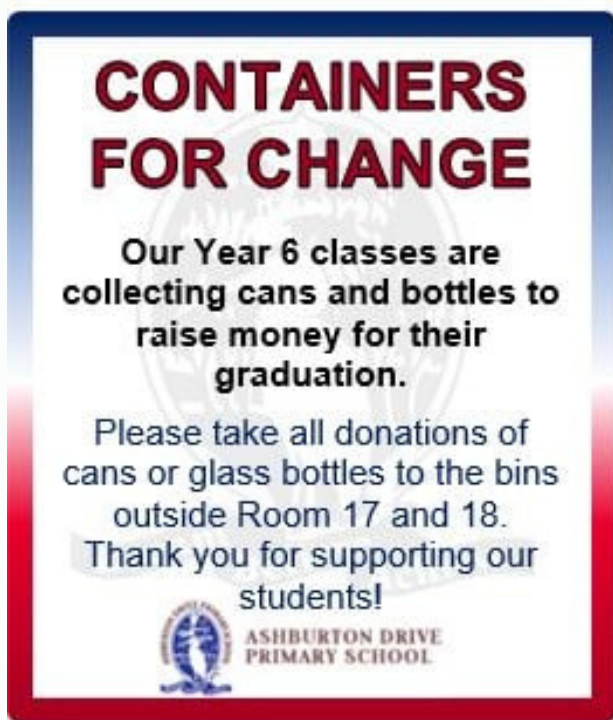
- Sausage Sizzle without sauce \$2.50
- Sausage Sizzle with sauce \$2.50
- Sausage Sizzle without sauce and fruit box \$3.50
- Sausage Sizzle with sauce and fruit box \$3.50



Return orders with money to the school red money box located in the front office. Orders and money need to be placed in the school red money box before 9.00am each Wednesday.

ORDERS WILL NOT BE ACCEPTED AFTER 9.00AM ON WEDNESDAY MORNING.

## Containers for Change



## Avenues for Information

There are so many school events taking place this term. Please stay up to date with the latest information by ensuring you are connected to Connect.

Both the Primary School and P&C are on Facebook, Please find us there for updates and notices.

The school website can be found at <https://www.ashburtondriveps.wa.edu.au/>.

Kind regards,

Heather Fallo  
Principal

## **Class and Staff Organisation 2021**

**Principal:** Heather Fallo

**Deputy Principals:** Tam Kelly, Keira MacLachlan, Brett Whiskin

**M.C.S:** Deanne Tabone

**School Officer:** Judy Rudrum

**Library Officer:** Tammie Hill

**Gardner/Handyman:** Bryce Instance

**Cleaners:** Peter Gomes, Dahlia Pabalate, Norma Rule

**Wellbeing Officer:** Helen Downie

**Physical Education Specialist Teacher:** Rachel Hawkes

**Music Specialist Teacher:** Nel Ranasinghe

**Science Specialist Teacher:** Jenny Hall

**Lote Specialist Teacher:** Maria Siciliano

**AIEO:** Sue Regan

**Education Assistants:** Anna Abramo, Miranda Anderson, Bron Cammiade, Helen Downie, Tina Guariglia, Linda Henton, Jenny Lenane, Jenny Neczypor, Wendy Smith, Annette Stagg, Janice Vincent

<b>Class</b>	<b>Teacher</b>
Unit 1 - Kindy	Natasha Leggatt
Unit 2 - Kindy	Jacqui McKinlay
Unit 3 - Kindy	Alison King
Unit 4 - PP	Jemma Bilman
Room 2 - PP & Yr 1	Wendy Green
Room 3 - Year 1	Julie Randall & Natasha Leggatt
Room 4 - PP & Yr1	Tracey Wood
Room 6 - Year 2	Karen Hendrix & Rachel Hawkes
Room 7 - Year 2	Ella Barron
Room 8 - Year 3	Angela Di Noto
Room 9- Year 3	Stephanie Argyle & Laura Walsh
Room 10 - Year 1 & 2	Liz Davies
Room 11 - Year 5	Julie Agnew
Room 13 - Year 5	Caitlin Hill
Room 14 - Year 4	Michelle Hariis
Room 15 - Year 4	Helen Rule
Room 16 - Year 6	Natasha Morton
Room 17- Year 6	Pa'ilagi Le-Mamea
Room 18 - Year 6	Lisa Williams
DOTT - Sharon Saunders	

# MUSIC NEWS!!!

**It is all happening in Music....**

**We have been incredibly lucky to purchase trumpets and trombones this year for our IMSS students to use, and Djembes and other percussion instruments for learning in Music.**

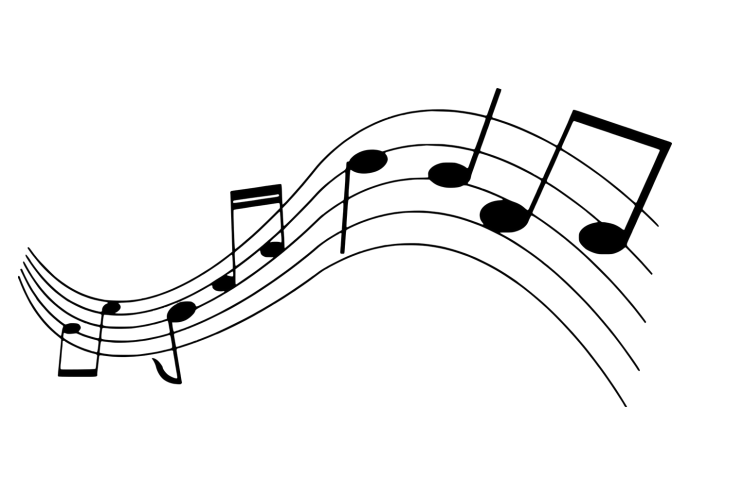
**The wheels are in motion for the Special Programs offered here at school.**

- Auditions are in the process for PuPPeTs & CLoWns and Choir.
- DRUMBEAT has also commenced for selected Year 6 students this term.
- 20 students in Year 5 & 6 currently learn Classical Guitar & Brass (trumpets, trombones, and baritones) through the Instrumental Music School Services (IMSS) program.

**Being a confident performer is of utmost importance in the Performing Arts, whether playing an instrument, singing or dancing. The Senior students enjoyed the introductory confidence building game, 'One kid at a time', where students each could be the centre of attention for a few seconds and show the rest of the class a dance move, which was then copied by all. This was a whole bunch of laughs for us all, and really did test their self-confidence of some students. It can be quite a challenge!**









Middle Primary students explored the relationship between Rhythm and Beat and attempted some Rhythm Reading Challenges. Students' focus and determination to move on to higher levels in the challenge was pleasing to note.





Our new djembe drums, all the way from Africa arrived last week and we are so excited!! They are beautifully hand carved and painted too, and they sound amazing. Our Year 5 students are looking forward to learning how to play them this year.

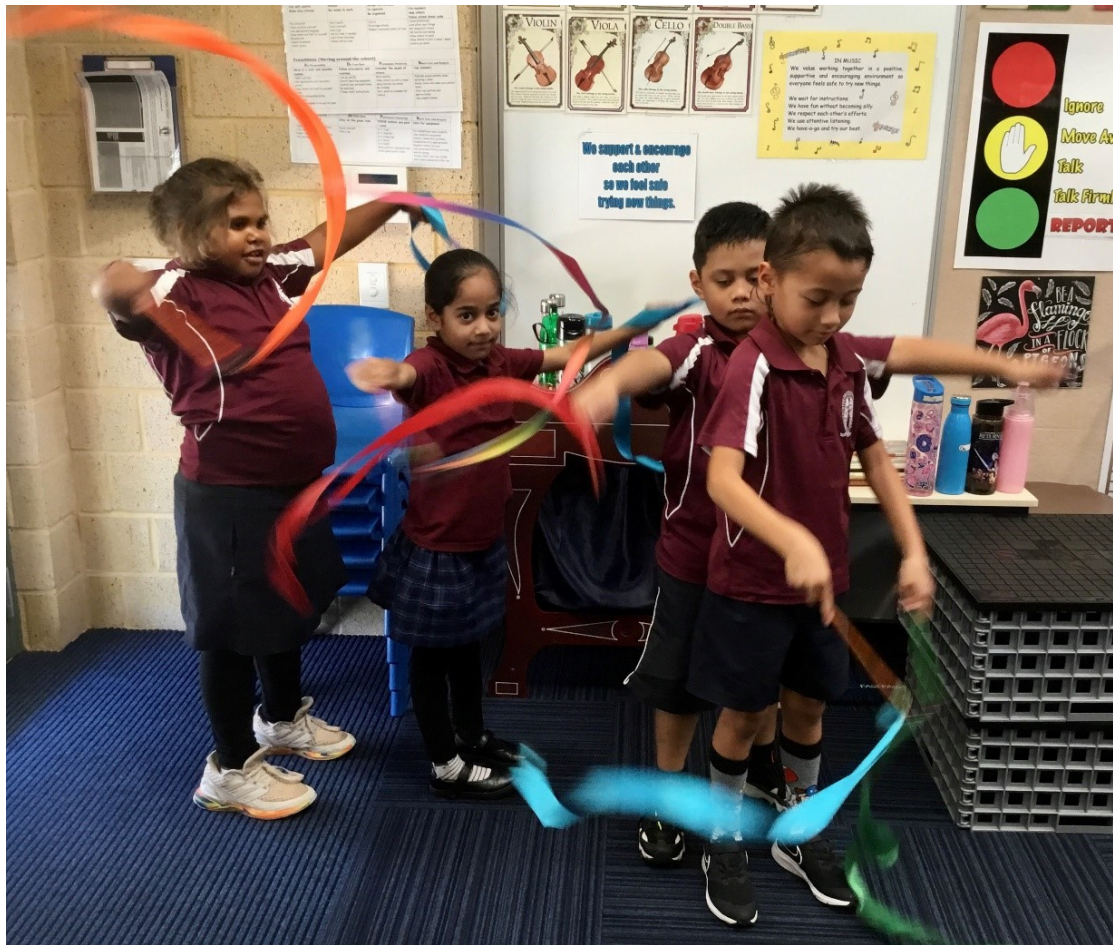








The Junior students are exploring musical expression using scarves and ribbons to The Flight of the Bumblebee. Students worked in groups to create a sequence of movements which they presented to the class. They will continue to explore classical music as they learn about the Orchestra this term.

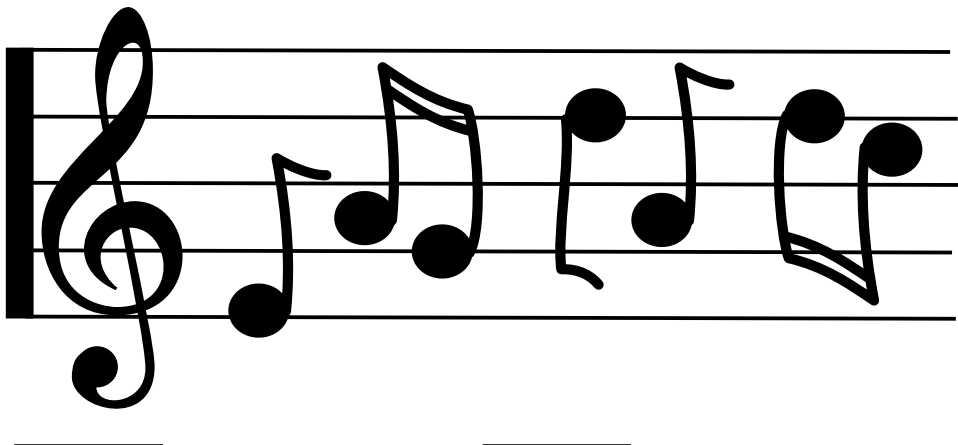






We look forward to more learning through singing, games, and dances as the term progresses.

Ms Ranasinghe – Music Teacher





# Merit Certificate Winners

Callie	Rizwan	Jaxon	Mia
Layla	Yanhui	Lucas	Hamza
Esma	Samuel	Mikayla	Te Aarahi
Mylika	Adeeva	Zedarius	Arenne
Ayden	Zacky	Sabrina	Amelia
Kobe	Allegra	Isabella	Cerys
Cody	Zirwa	Seth	Isabel
Ryan			



## Green Block



## Strickland Block







## Draffen Block



## Medallion Winners



## P&C News 19th February 2021

Welcome back to 2021 already week 2!!!

### Fundraising

We have some exciting fundraising ideas coming up soon so stay tuned!

### Canteen

The canteen is now open from 8.30am in the morning until 2.00pm. The canteen relies on volunteers to help prepare and serve lunches alongside Kathy. Volunteers can receive a \$6.00 ADPS canteen voucher for volunteering their time. Your child would love to see you in the canteen! If you are able to spare an hour or two, please contact Kathy or visit the P&C Facebook page and leave a message. A reminder the canteen has EFTPOS for your convenience.

### Quickcliq

Quickcliq is our online ordering portal for the Canteen. Signing up is easy and the account is generally ready to go within minutes! Jump onto [www.quickcliq.com.au](http://www.quickcliq.com.au) for more information on how to sign up!

### School Banking

Banking is Friday morning at the canteen window from 8.15am to 9.00am. Michele is handing out Dollarmites at our popup bank. It is a great way to teach kids how to handle money, plus they get rewarded! Visit Michele at the Canteen on Friday mornings or the Commonwealth Bank online or in branch to find out more.



### Communication

Communication with our school community is very important. Have you joined our Facebook group? This is the best place to get up to date and last-minute information such as canteen specials, fundraising events, banking change of dates and other news. You can also email us at [adpspc@gmail.com](mailto:adpspc@gmail.com) Don't forget you can always drop a note in the blue P&C box in the front office

Yours sincerely

**Amanda Daintith**

**President**





# GFMD CANTEEN MENU



Term 1  
2021

**\*\*Prices subject to change without notice\*\***

## DAILY SPECIALS

<u>MONDAY</u>	
(A) Party Pies	1.30
(A) Sausage roll	3.00
(A) Beef pie	4.00
Tomato Sauce	0.50
<u>TUESDAY</u>	
(G) Hambo	4.50
Hot ham and cheese roll	
(G) Tropical Hambo	5.00
Hot ham cheese pineapple roll	
<u>WEDNESDAY</u>	
CANTEEN CLOSED	
<u>THURSDAY</u>	
(G) Hamburger w/salad	5.00
(G) Chicken Burger w/salad	5.00
<u>FRIDAY</u>	
(A) Cheese	4.00
(A) Supreme	4.00
(A) Hawaiian Pizza	4.50
(A) Party Pies	1.30
(A) Sausage roll	3.00
(A) Beef pie	4.00
Tomato Sauce	0.50



## EVERY DAY HOT FOODS

(G) 1/2 Hot Chicken Roll	2.50
(G) Hot Chicken Roll	4.50
(G) Chicken Nuggets	4.00
4 crumbed 100% breast nuggets.(Baked)	
(G) Macaroni and Cheese	5.00
(G) Pasta Bolognaise	5.00
(G) Chicken Strip Wrap	5.00
( chicken strip with salad+mayo)	
(G) Fried Rice	5.00

## TOASTED SANDWICHES/WRAP

(G) Cheese	3.50
(G) Ham & Cheese	4.00
(G) Chicken and Cheese	4.50
(G) Chicken Burrito	5.00
Chicken, sauce & cheese in a toasted wrap	

## SANDWICHES

	OR	WRAPS
(G) Vegemite	2.50	3.00
(G) Vegemite and Cheese	3.00	3.50
(G) Salad	3.50	4.00
(G) Cheese	3.00	3.50
(G) Cheese and Salad	4.00	4.50
(G) Plain Egg	3.50	4.00
(G) Curried Egg	4.00	4.50
(G) Egg & Salad	4.00	4.50
(G) Ham & Salad	4.50	5.00
(G) Chicken	4.00	4.50
(G) Chicken & Salad	4.50	5.00
(G) Mrs Hall	5.00	5.50

Ham/Chicken Beetroot, Tomato, Lettuce,  
Cucumber and Cheese

## SALADS

(G) Salad Bowl	4.50
Add Chicken	1.00
Add Ham	1.00
Add Egg	1.00
(G) Caesar Salad	5.00
Lettuce, Bacon & Cheese, Croutons	
Caesar Dressing	
Add Chicken	1.00
Add Egg	1.00
(G) Cold Pasta Salad	5.00
pasta, carrot, corn, cheese, tomato, and Italian salad dressing	

## EXTRAS

Teaspoon or Fork	0.05
Cheese or Egg	1.00
Mayonnaise or Beetroot	1.00
Tomato Sauce	0.50

## RECESS SALES ONLY

## CHANGES DAILY

(Recess Can Be Pre-ordered)

(G) Pikelets	0.10
(G) Popcorn	0.50
(G) Fruit (Apple or Banana)	1.00
(G) Yoghurt Cups	1.50
(G) Fruit & Yoghurt Cups	2.00
(G) Large Cheesies	1.20
(G) Pizza	1.50

## DRINKS

(G) Bottled Water 600ml	1.60
(G) Fruit Boxes	1.80
Apple or Apple & Blackcurrent	
(A) Up & Go 250ml	2.50
Chocolate, Vanilla or Banana	
(G) Small Flavoured Milk	2.50
chocolate, strawberry, spearmint	



## LUNCH SALES ONLY

(A) Quelch Full	1.00
(A) Vanilla Buckets	2.00
(A) Paddle pop Icecreams	2.00



**EFTPOS NOW AVAILABLE AT GFMD CANTEEN**

## LUNCH ORDERS NOW ON LINE!!!

Go to <https://quickcliq.com.au/> register your child/children's, create an account and start ordering!! It's easy..no bags, no change, no waiting, no lost orders. Please place your ordered on line by 9.30am. ALL lunch orders are to be handed into the canteen, or place in the Lunch Box in the classroom before school.



## PLEASE NOTE:

The canteen does NOT offer credit

Hot recess items are limited, so we suggest ordering before school to avoid disappointed. Recess items can be ordered on lunch bags. All pre-ordered ice-creams are to be collected from the canteen by taking your lunch bag to the canteen after eating lunch.

## FOOD ALLERGIES

With the increase of allergies in Children, it is difficult to cater all needs. If you have a child that has an allergy, please come and see us. Privacy laws prohibit the School from passing on any medical information to the P&C and Canteen. Please note that due to the nature of the Canteen we cannot guarantee that we can cater to specific allergies if allergens are present in the canteen.

## RE-HEATING OF FOODS

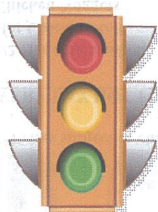
Health regulations prohibit the canteen from storing or re-heating foods brought from home.

## VOLUNTEERS

Volunteers are always required and very welcome. If you are currently not on our list of volunteers and would like to come in, please either come into the canteen and put your name on the roster or phone the numbers listed across. Phone school on 0892346300 or Canteen on 0892346319

## Canteen Traffic Light System

Our canteen follows the State Governments Policy and Standards for healthy foods and drinks provided in WA school canteens.



**GREEN:** Fill the Menu  
**AMBER:** Select Carefully  
**RED:** OFF the Menu



**\*\*This menu meets with all government requirements for school canteens\*\***

# Term 1 Parent Planner



## Ashburton Drive Primary School Parent Planner Term 1, 2021



Week	Monday	Tuesday	Wednesday	Thursday	Friday
	25 January	26 January <b>AUSTRALIA DAY</b>	27 January	28 January <b>Staff PD DAY</b>	29 February <b>Staff PD DAY</b>
<b>1</b>	1 February <b>Students Resume</b>	2 February	3 February	4 February Kindy	5 February Kindy
<b>2</b>	8 February	9 February	10 February Kindy	11 February Kindy	12 February Office Display-Unit4 Kindy
<b>3</b>	15 February	16 February	17 February	18 February Kindy	19 February Assembly-Councillors Newsletter-Music Kindy
<b>4</b>	22 February	23 February	24 February Kindy	25 February Kindy	26 February Office Display-Room 17&18 Newsletter-LOTE Assembly-Room 6 Kindy
<b>5</b>	1 March <b>LABOUR DAY</b>	2 March	3 March	4 March Kindy	5 March Kindy
<b>6</b>	8 March	9 March	10 March Kindy	11 March Kindy	12 March Office Display-Unit 3 Assembly-Room 16 Kindy
<b>7</b>	15 March	16 March	17 March	18 March Kindy	19 March Newsletter-Unit 4 Summer Carnival Kindy
<b>8</b>	22 March	23 March	24 March Kindy	25 March Kindy	26 March Office Display-Room 10 Assembly-Room 8 Kindy
<b>9</b>	29 March	30 March Personal Best Years 1-6 Picnic at the park	31 March	1 April Personal Best Kindy & PP – Messy play day Kindy Newsletter-Room 13& 14 Last day of term 1	<b>GOOD FRIDAY</b>



# Community News

## Term 1 2021 Child and Parent Centre Calendar

### TERM 1 2021 CALENDAR

	Week 1	Week 2	Week 3	Week 4	Week 5	Week 6	Week 7	Week 8	Week 9
	1 February	8 February	15 February	22 February	1 March	8 March	15 March	22 March	29 March
Monday			9.15am – 11.00am Let's Talk Toileting	9.00am – 11.00am Now You've Started School	Public Holiday	9.00am – 11.00am Life can be tough – bend don't break		12.30pm – 2.30pm Who's the Boss Now?	9.30am – 11.30am Is my child on-track?
Tuesday	2 February 9.15am – 10.00am Rhyme Time	9 February 9.15am – 10.00am Rhyme Time 12.30pm – 2.30pm Circle of Security	16 February 9.15am – 10.00am Rhyme Time 12.30pm – 2.30pm Circle of Security	23 February 9.15am – 10.00am Rhyme Time 12.30pm – 2.30pm Circle of Security	2 March 9.15am – 10.00am Rhyme Time 12.30pm – 2.30pm Circle of Security	9 March 9.15am – 10.00am Rhyme Time 12.30pm – 2.30pm Circle of Security	16 March 9.15am – 10.00am Rhyme Time 12.30pm – 2.30pm Circle of Security	23 March 9.15am – 10.00am Rhyme Time 12.30pm – 2.30pm Circle of Security	30 March 9.15am – 10.00am Rhyme Time 12.30pm – 2.30pm Circle of Security
Wednesday	3 February 9.00am – 10.30am Settle-In PG 12.30pm – 2.00pm Playtime PG	10 February 9.00am – 10.30am Settle-In PG 9.30am – 11.30am PP Sutherlands Park Huntingdale 12.30pm – 2.00pm Playtime PG	17 February 9.00am – 10.30am Settle-In PG 9.30am – 11.30am PP Centennial Pioneer Park Federation Parade Gosnells 12.30pm – 2.00pm Playtime PG	24 February 9.00am – 10.30am Settle-In PG 12.30pm – 2.00pm Playtime PG	3 March 9.00am – 10.30am Settle-In PG 12.30pm – 2.00pm Playtime PG	10 March 9.00am – 10.30am Settle-In PG 9.30am – 11.30am PP Sutherlands Park Huntingdale 12.30pm – 2.00pm Playtime PG 6.00pm – 7.30pm Preparing your Child for a New Baby	17 March 9.00am – 10.30am Settle-In PG 9.30am – 11.30am PP Centennial Pioneer Park Federation Parade Gosnells 12.30pm – 2.00pm Playtime PG	24 March 9.00am – 10.30am Settle-In PG 12.30pm – 2.00pm Playtime PG 5.30pm – 8.30pm Fear-Less	31 March 9.00am – 10.30am Settle-In PG 12.30pm – 2.00pm Playtime PG
Thursday	4 February 9.00am – 10.30am Multicultural PG 12.30pm – 2.00pm CHN Drop-In 2.00pm – 2.30pm Baby Rhyme Time	11 February 9.00am – 10.30am Multicultural PG 12.30pm – 2.00pm CHN Drop-In 2.00pm – 2.30pm Baby Rhyme Time	18 February 9.00am – 10.30am Multicultural PG 12.30pm – 2.00pm CHN Drop-In 2.00pm – 2.30pm Baby Rhyme Time	25 February 9.00am – 10.30am Multicultural PG 12.30pm – 2.00pm CHN Drop-In 2.00pm – 2.30pm Baby Rhyme Time	4 March 9.00am – 10.30am Multicultural PG 12.30pm – 2.00pm CHN Drop-In 2.00pm – 2.30pm Baby Rhyme Time	11 March 9.00am – 10.30am Multicultural PG 12.30pm – 2.00pm CHN Drop-In 2.00pm – 2.30pm Baby Rhyme Time	18 March 9.00am – 10.30am Multicultural PG 12.30pm – 2.00pm CHN Drop-In 2.00pm – 2.30pm Baby Rhyme Time	25 March 9.00am – 10.30am Multicultural PG 12.30pm – 2.00pm CHN Drop-In 2.00pm – 2.30pm Baby Rhyme Time	1 April 9.00am – 10.30am Multicultural PG 12.30pm – 2.00pm CHN Drop-In 2.00pm – 2.30pm Baby Rhyme Time
Friday	5 February 9.30am – 11.30am First Steps PG	12 February 9.30am – 11.30am First Steps PG	19 February 9.30am – 11.30am First Steps PG	26 February 9.30am – 11.30am First Steps PG 9.30am – 11.30am PP Robinson Park Corfield Street Gosnells	5 March 9.30am – 11.30am First Steps PG 9.30am – 11.30am Bellies, Births and Babies Expo 2021 Mills Park Brixton Street Beckenham	12 March 9.30am – 11.30am First Steps PG	19 March 9.30am – 11.30am First Steps PG	26 March 9.30am – 11.30am First Steps PG 9.30am – 11.30am PP Robinson Park Corfield Street Gosnells	2 April Public Holiday

#### Bookings essential unless stated otherwise

##### Rhyme Time

Songs, stories and rhymes for families with children 12months to 5 years.

##### Baby Rhyme Time

Songs, stories and rhymes for families with babies under 12 months.

##### Playtime Playgroup (Playtime PG)

Playgroup for children aged 0-4yrs. Please bring a water bottle and pre-cut piece of fruit in a container for your child.

##### Multicultural Playgroup (Multicultural PG)

Playgroup for children aged 0-4yrs. Please bring a water bottle and pre-cut piece of fruit in a container for your child.

##### Settle-In Playgroup (Settle-In PG)

For newly arrived families with children aged 0-5years on a Humanitarian visa. Offered in partnership with Communicare & Save the Children. Phone: 9251 5777.

##### First Steps Playgroup (First Steps PG)

Autism Association of WA are offering a free playgroup for families with a child under 6yrs who may experience delays in communication, difficulty engaging with others, or have delayed play skills. Register your interest by contacting Stacey Cole on 6380 5500 or [Stacey.Cole@autism.org.au](mailto:Stacey.Cole@autism.org.au)

##### Now You've Started School (crèche available)

This workshop is for parents of children who have started Kindy and may need help to manage separation stress and establish routines. Facilitated by Department of Education.

##### Circle of Security (crèche available)

Learn how to strengthen your parent-child relationship and explore new ways to understand and respond to your children's behaviour. Facilitated by Department of Health

##### Let's Talk Toileting (crèche available)

This workshop will outline the best approach to toileting training and the skills needed from both you and your child. Facilitated by Communicare.

##### Who's the Boss Now (crèche available)

Building on the Who's the Boss workshop, learn more about parenting styles and how best to deal with challenging behavior. Facilitated by Department of Education.

##### Life can be tough – Bend don't break (crèche available)

Learn how resilience can contribute to your health & wellbeing and how to build your resilience. Facilitated by Anglicare WA

##### Preparing Your Child for the New Baby

Soon to have a baby but not sure how your child is going to cope? Come along to this workshop to get some tips to help. Facilitated by Department of Education

#### Is My Child On-track? (crèche available)

This workshop will help guide you in understanding if your child is on-track with their development. Facilitated by Department of Education, Department of Health - Child Health, Allied Health and Communicare

#### Fear-Less - Helping your Children Learn to Manage Anxiety

This seminar will provide parents with anxiety management skills to teach your child, an understanding of anxiety and how to help your child develop coping skills to face feared situations. Facilitated by the Department of Education.

#### CHN (Child Health) Drop-In

Thursdays 12.30pm – 2.00pm

#### Immunisation Clinics

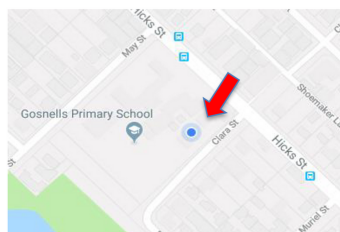
Immunisation Clinics are offered Wednesday fortnight. Call 6151 1308 to book your appointment.

#### Park Play (PP)

The CPC team join the City of Gosnells for a fun session of games in the Park.

#### City of Gosnells Bellies, Births and Babies Expo

Parents will be provided with information and support on services and activities that are available in the community.



#### Child and Parent Centre – Gosnells

173 Hicks Street (enter via Clara Street)  
GOSNELLS WA 6109  
T 08 9398 8720  
E [CPCGosnells@centrecare.com.au](mailto:CPCGosnells@centrecare.com.au)

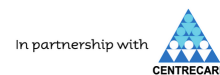
Child and Parent Centres are a State Government initiative.

Your Child and Parent Centre – Gosnells is run by Centrecare in partnership with Gosnells Primary School.



#### Child and Parent Centre – Gosnells Term 1, 2021

For parents, carers and young children





## Understanding Anxiety and Depression in Youth Family and Relationship Services

### For Parents of children aged 12-18 years

#### 1-session

#### Workshop Overview

Do you have a young person in your life that may be experiencing anxiety or depression?

This online workshop covers the challenges experienced by anxious and/or depressed adolescents and provides practical ideas and tips for parents and carers to assist their child and themselves.

Please provide your full name, contact number and postcode when registering via e-mail. Bookings are essential as places are limited.



#### BOOKINGS



9251 5777



[parenting@communicare.org.au](mailto:parenting@communicare.org.au)



<https://uadinyouth.eventbrite.com.au/>



#### DATES

Monday

22 March 2021



#### TIME

6.30pm - 8.30pm



#### LOCATION

Lynwood Youth and  
Family Centre  
11 Edgeware Street  
Lynwood



#### COST

Free



#### CRECHE

Not available



Prohibition signs

Parking prohibitions are imposed to regulate and modify parking patterns. Their main function is to ensure that potential conflicts between vehicles and pedestrians are eliminated.



**No Stopping**  
You must not stop on a length of road to which a No Stopping sign applies.



**No Parking**  
You may stop in a No Parking zone for a maximum of two minutes to drop off or pick up passengers. You must stay within 3 metres of your car at all times.



**Parking Signs**  
Parking signs with specified time limits allow drivers to park their vehicles for a certain period of time.



**Bus Zone**  
You must not stop or park in a bus zone. Parking in a bus zone puts lives at risk.

City of Gosnells  
PO Box 662  
Gosnells WA 6990  
9397 3000

council@gosnells.wa.gov.au  
www.gosnells.wa.gov.au

Common offences around schools

On this occasion you have been deemed to be:

☒ Please be advised this is a caution for the above offence

Nature of offence	Penalty
<input type="checkbox"/> Parking contrary to signs or limitations	\$100
<input type="checkbox"/> Parking against the flow of traffic	\$100
<input type="checkbox"/> Causing obstruction	\$100
<input type="checkbox"/> Double parking	\$100
<input type="checkbox"/> Obstructing a driveway or other way of access	\$100
<input type="checkbox"/> Parking within 10 metres of an intersection	\$100
<input type="checkbox"/> Parking vehicle within 10 metres of departure side or within 20 metres of approach side of pedestrian, children's or rail crossing	\$100
<input type="checkbox"/> Stopping contrary to a 'No Stopping' sign	\$100
<input type="checkbox"/> Parking contrary to a 'No Parking' sign	\$100
<input type="checkbox"/> Stopping near bus stop	\$100
<input type="checkbox"/> Stopping on footpath, median strip or traffic island	\$100
<input type="checkbox"/> Stopping on a verge - without consent	\$100
<input type="checkbox"/> Parking or Stopping in Disabled Parking area	\$300
<input type="checkbox"/> Stopping or parking on a yellow line	\$100

Please refer to the City of Gosnells *Parking Local Law 2012* for the full list of prescribed offences.

School parking

In an effort to provide a safer environment for everyone, the City of Gosnells Ranger Services patrol school parking mornings and afternoons throughout the school term.

It is imperative that drivers are aware of the road rules and understand signage around schools to ensure the safety of children, road users and pedestrians. Unlawful parking in school areas is a major safety hazard and parking infringements may be issued for incorrect, unlawful or dangerous parking.

At the beginning of each school year, Rangers conduct educational patrols in school areas. During this period Rangers remind drivers of the need to park legally and safely and enforce the *Parking Local Law 2012* in a number of ways.

As part of this initiative, Rangers also work closely with the school community to promote safety around schools. Information leaflets are distributed to schools for inclusion in school newsletters, and advise parents of the parking requirements under the *Parking Local Law 2012*.



Common parking problems

- Parking in a **No Stopping** area
- Parking in a **No Parking** area
- Double parking
- Parking on a nature strip or verge without the owner's consent
- Parking so that the vehicle causes an obstruction
- Parking against the flow of traffic
- Stopping or parking on a footpath
- Stopping or parking at a bus stop

Be responsible

- Observe parking restrictions (read the signs)
- Be aware
- Use Kiss and Drive (if provided)
- Always be aware of children
- Walk or cycle to and from school
- Plan your trip so that you arrive earlier
- Stop on the school side so your child does not have to cross the road
- Use the crosswalk services at all times
- Use parent's parking bays (where provided)

What NOT to do

- Block driveways
- Park on footpaths
- Obstruct Children's Crossing
- Get frustrated
- Ignore speed limits around schools
- Ignore parking signs

If you need help or advice regarding parking contact Ranger Services during office hours on 9397 3000.

Safety around schools



School zones

40km/hr school zones are in place around every school in the City of Gosnells. School zones operate from 7.30am to 9am and 2.30pm to 4pm.

Children warning signs and 40km/hr school zone speed signs are the responsibility of Main Roads WA.

Kiss and Drive

Kiss and Drive zones typically allow parents to pick up and drop off children adjacent to the main school entrance. Kiss your child, say goodbye, allow them out and drive away as soon as possible.

When using the designated Kiss and Drive zone around schools, never leave your car unattended.

Contact your local school to find out if a Kiss and Drive initiative is in place.

Continuous yellow line markings

You cannot stop or park anywhere along a single yellow line painted on the edge of the road. This restriction is in place 24 hours a day and attracts a \$100 penalty.

The City will use yellow lines instead of signage where placement of signs may be difficult, pose a hazard or affect the amenity of an area.

# **RANFORD JUNIOR SOCCER CLUB 2021 SEASON**

WANT TO DEVELOP SELF-ESTEEM, INTERPERSONAL RELATIONSHIPS AND SOCCER SKILLS IN A FRIENDLY, SEMI-COMPETITIVE, FAMILY ORIENTATED ATMOSPHERE?

THEN WHY NOT REGISTER FOR THE UPCOMING SEASON AT RANFORD JUNIOR SOCCER CLUB! ALL TRAINING SESSIONS AND GAMES ARE HELD AT RANFORD OVAL AND WE PLAY AN INTER-CLUB COMPETITION WITH ALL GAMES ON SATURDAY MORNINGS.

THERE ARE SIX TEAMS IN EACH DIVISION AT RJSC AND WE AIM TO ARRANGE THE TEAMS SO THEY ARE ALL EVENLY MATCHED!

## **JUNIOR**

PRE-PRIMARY, YEAR 1 AND  
YEAR 2

GAMES KICK-OFF @  
9:00AM

## **INTERMEDIATE**

YEAR 3 AND  
YEAR 4

GAMES KICK-OFF @  
10:00AM

## **SENIOR**

YEAR 5, YEAR 6  
AND YEAR 7

GAMES KICK-OFF @  
11:00AM

TRAINING IS ON EITHER A MONDAY OR WEDNESDAY FROM 4:30 TILL 5:30PM.

NEVER PLAYED SOCCER  
BEFORE BUT WANT TO  
GIVE IT A GO?  
RJSC IS PERFECT FOR YOU!  
WE WELCOME PLAYERS OF  
ALL SKILL LEVELS AND  
ENCOURAGE PARTICIPATION  
AND EFFORT IN A SEMI -  
COMPETITIVE ENVIRONMENT.



PARENTS – HAVE YOU  
CONSIDERED COACHING A  
TEAM? ITS GREAT FUN AND  
VERY REWARDING. WE EVEN  
RUN A FREE CLINIC AT THE  
START OF THE YEAR WITH  
DRILL HANDOUTS SO NO  
EXPERIENCE IS NEEDED.

## **!!ONLINE REGISTRATIONS ARE OPEN NOW!!**

[CLICK HERE FOR A LINK TO THE REGISTRATION PAGE ON OUR WEBSITE](#)

DOWNLOAD THE REGISTRATION FORM, FILL IT OUT AND EMAIL IT BACK TO US.

IF YOU REGISTER BY EMAIL IT'S ALSO A GOOD IDEA TO COME BY ON ONE OF THE REGISTRATION DAYS TO TRY ON A SHIRT SO YOU CAN CHECK YOUR SIZE IS CORRECT.

## **IN PERSON REGISTRATION INFORMATION**

**WHEN** – SATURDAY 13 FEBRUARY FROM 8:00AM TILL 12:00PM

SATURDAY 20 FEBRUARY FROM 9:00AM TILL 12:00PM

SATURDAY 27 FEBRUARY FROM 9:00AM TILL 12:00PM – TBC

**WHERE** – RANFORD PAVILION @ RANFORD OVAL

[CLICK HERE FOR A LINK TO GOOGLE MAPS](#)

**COST** – NEW PLAYERS \$190 (INCLUDES SHIRT, SHORTS & SOCKS)

RETURNING PLAYERS FROM PREVIOUS YEAR \$140 (INCLUDES SHIRT ONLY)

PAYMENT TO BE MADE ON REGISTRATION DAY – CASH AND EFT ACCEPTED

## **CONTACT INFORMATION**

Email: [ranfordjsc@gmail.com](mailto:ranfordjsc@gmail.com)

Web: [www.ranfordjsc.com.au](http://www.ranfordjsc.com.au)

Mobile: 0404064029